



Japan.
Endless
Discovery.

JAL
JAPAN AIRLINES

2025 FALL HOKKAIDO HIGHLIGHTS PLUS SHOPPING TOUR #2

Enjoy your choice of Japan Airlines' "Economy," "Premium Economy," or the affordable luxury of "Business" class service. Premium Economy class customers will begin their journey with a relaxing visit to JAL's "Sakura Lounge" and the brand new "Sakura Lounge — Hale" for Business class.

*New and improved meals! Enjoy Hokkaido's beauty and delicious seafood!
Experience the best of Hokkaido on this adventure of a lifetime!*

5 Nights / 7 Days • 12 Meals (5 Breakfasts, 3 Lunches, 4 Dinners)
Escorted from Honolulu • Includes an English-Speaking Local Guide
Tour #2: October 07 – 13, 2025 • Tour Manager: Eric Yosemite

VISIT:

Haneda • Asahikawa • Biei • Furano • Shiraoi • Noboribetsu • Sapporo

TOUR HIGHLIGHTS:

Sunagawa Highway Oasis • Asahiyama Zoo • Otokoyama Sake Brewery • Blue Pond Roller Coaster Road • Shikisai no Oka • Furano Cheese Factory • Ningle Terrace Yuni Garden • Shiraoi Egg Village Mother's + • National Ainu Museum UPOPOY ROYCE' Cacao and Chocolate Town • Sapporo Central Wholesale Market • TV Tower Clock Tower • Former Government Building • Odori Park • Tanuki Koji Shopping Arcade AEON MALL Sapporo Hiraoka • Chitose Airport Domestic Terminal Shopping

HANDS-ON EXPERIENCES:

Sake Tour and Tasting • Ice Cream Making

COMPLETE PACKAGE!

Includes Roundtrip Airfare from Honolulu, 5 Nights Hotel, 12 Meals, Tips for Local Tour Guides and Bus Drivers, All Taxes & Fees

**JAPAN AIRLINES:
CHOICE OF CABINS**
Treat yourself to a better vacation!

JAL ECONOMY CLASS
\$3,288*

JAL PREMIUM ECONOMY CLASS
\$4,488*

HURRY! Only 6 Seats Available at this Price!!

*Premium Economy class seating is for flights between Honolulu and Japan only. Domestic Japan flights do not offer Premium Economy class seating.

JAL BUSINESS CLASS
\$6,688*

HURRY! Only 6 Seats Available at this Price!!

**EARLY BOOKING
DISCOUNT PER PERSON†**
Book by 04/15/25 & **SAVE \$100**
Book by 05/30/25 & **SAVE \$50**

**Non-Stop Travel
Exclusive!**

DON'T MISS A THING!!
WHISPER — *Wireless Tour Guide System!*
English narration directly to your ear!

**Non-Stop Travel
Hokkaido
Exclusives!**

ICE CREAM MAKING —
Made with Fresh Hokkaido Milk!
CRABS — *Pick'em "LIVE" from the tank!*
Savor the sweet "freshly steamed" morsels!



Locally Owned & Operated
Since 1985 — Mahalo Hawai'i!

615 Piikoi Street, Suite 102
Honolulu, Hawaii 96814

593-0700
or Toll-Free
1-800-551-1226

www.nonstop.travel



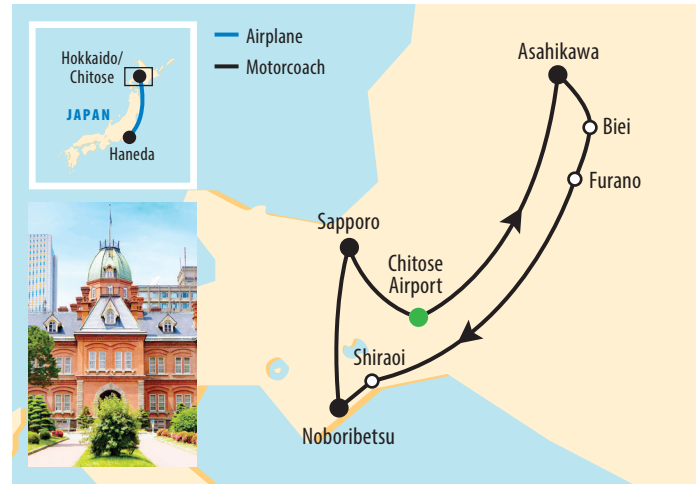
Day 1: Tue, Oct 07 – HONOLULU. Depart Honolulu via Japan Airlines flt #73 at 12:15 pm.

Day 2: Wed, Oct 08 – HANEDA. Arrive at the Haneda International Airport at 3:55 pm. After entry formalities, walk to your hotel connected to the airport terminal. Enjoy a buffet dinner at the hotel. HOTEL VILLA FONTAINE GRAND HANEDA AIRPORT (1 Night) (D)

Day 3: Thur, Oct 09 – HANEDA – CHITOSE – ASAHIKAWA. After a breakfast buffet at your hotel, transfer back to the Haneda airport terminal. Depart Haneda Domestic Airport via Japan Airlines flt #511 at 10:30 am and arrive at the Chitose Domestic Airport at 12:00 pm. Depart the airport for Asahikawa. En route, stop at the **Sunagawa Highway Oasis**, a shopper's paradise on the way to Asahikawa, for an opportunity to rest and shop for souvenirs. Next, visit the **Asahiyama Zoo** and see some of their unique displays, including the underwater glass penguin tunnels, "seal eye" domes in the polar bear exhibit, and the suspension bridge connecting the lesser panda enclosures. Enjoy a **Kaiseki Dinner** at a local restaurant in Asahikawa. OMO7 ASAHIKAWA BY HOSHINO RESORTS (1 Night) (B, D)

Day 4: Fri, Oct 10 – ASAHIKAWA – BIEI – FURANO. Begin the day at the **Otokoyama Sake Brewery** for a **tour of the facilities** and **tasting of sake and other tasty products**. Next, travel to Biei to visit the **Blue Pond**. The pond gets its name from the almost unworldly blue color of its waters. Depending on the weather and season, it can change from a milky light blue to a deep green-turquoise. Stop for photos on **Roller Coaster Road**. After lunch, view the panoramic flower gardens of **Shikisai no Oka** which provides spectacular views across the hills of the Biei Area. Next, stop at **Furano Cheese Factory** to **learn how to make ice cream**. A refreshing treat! Arrive at the hotel and explore the nearby **Ningle Terrace**, a hub where local artists sell hand-made crafts, including pottery, jewelry, paper art, glass art, and so on. Enjoy a buffet dinner at the hotel. SHIN FURANO PRINCE HOTEL (1 Night) (B, L, D)

Day 5: Sat, Oct 11 – FURANO – SHIRAOI – NOBORIBETSU. After breakfast, depart the hotel and visit **Yuni Garden** – for a chance to stretch your legs and view the various flowers in the garden. A quick stop will be made at **Shiraoi Egg Village Mother's +** to view and shop for fresh egg and baked products. Officially opened on July 12, 2020, the mission of the new **National Ainu Museum UPOPOY** is "to promote a proper understanding and awareness of Ainu history and culture in Japan and elsewhere out of respect for the dignity of the indigenous Ainu people, while contributing to the creation and development of new aspects of Ainu culture." Learn about the Ainu people and culture via short films shown on the large screen in the 96 seat theater, and through the various artifacts and displays set up in the exhibition rooms located on the 2nd floor of the museum. Continue on to the hotel in Noboribetsu. Relax in the hotel **onsen hot springs**, before or after dinner. The onsens – which are divided for men and women – allow you to enjoy the hot springs whether indoors or outdoors. The high-quality



service and facilities are sure to become some of your fondest memories of your visit to Japan. DAI-ICHI TAKIMOTOKAN (1 Night) (B, L, D)

Day 6: Sun, Oct 12 – NOBORIBETSU – SAPPORO. Depart for Sapporo. Stop at the new **ROYCE' Cacao and Chocolate Town** to learn how the famous ROYCE' chocolate treats are made. Receive a complimentary sample at the end of the tour. **Pick out "LIVE" crabs*** to enjoy with your kaisen don (fresh seafood over rice) lunch at the **Sapporo Central Wholesale Market**, where an abundance of fresh seafood and the freshest local products can be found. Upon arrival in Sapporo, get a brief city tour. Drive by the **TV Tower, Clock Tower, the Former Government Office Building, and Odori Park**. Then explore the **Tanuki Koji Shopping Arcade**, the largest and oldest shopping arcade in Sapporo, which houses over 200 shops. Arrive at the hotel for an evening of leisure. KEIO PLAZA HOTEL SAPPORO (1 Night) (B, L)

*One live crab for every 6th tour member.

Day 7: Mon, Oct 13 – SAPPORO – CHITOSE – HANEDA – HONOLULU. Enjoy a morning at leisure. Depart the hotel for a last minute shopping stop at **AEON MALL Sapporo Hiraoka** before arriving early at the Chitose Domestic Airport, to begin exploring the **shopping mall located within the Domestic Terminal**. Consisting of four floors of restaurants, shops and activities, there's something for everyone. Those with a sweet tooth will enjoy the Sweets Zone, where you can enjoy Hokkaido sweets in a spacious and relaxing setting, and the ROYCE' Chocolate World (factory, museum, shop, and bakery) and LeTAO Chocolatier. The kids (and those young at heart) will enjoy the Doraemon Sky Park and Hello Kitty Happy Flight, which have an activity area, shop and café (fees may apply) or the Pokémon store. UNIQLO aims to provide customers with "ultimate casual clothes." And there are more than two dozen shops at the airport that specialize in various fresh, frozen, or dried seafood that can be eaten there or packed for you to bring home. Or you can relax in the airport onsen or movie theater (for a fee). Depart Chitose Domestic Airport via Japan Airlines flt #518 at 5:00 pm and arrive at the Haneda Domestic Airport at 6:45 pm. Depart Haneda International Airport via Japan Airlines flt #74 at 9:05 pm and arrive in Honolulu at 9:35 am the same day. Aloha and welcome home! (B)

*Fares are per person, USD based on double occupancy and include all airline taxes and fees. Airline fuel supplements, taxes and fees are subject to change and tour member is responsible for any increases. Some airline-imposed personal charges, including but not limited to baggage, priority boarding and special seating, may apply. For details visit www.tripadvisor.com/AirlineFees. After initial deposit, a \$75 per person Non-Stop Travel (NST) Cancellation Fee will apply. Group departures may be cancelled, if there are less than 24 tour members. Final payment to NST for "non-cruise/line" Air and Land Package must be made by money order or personal check. NST does not guarantee that all tour members will fly together with Tour Manager. Tour Manager assignments, number of meals offered on tour, tour price, discount, and the "final" cruise or tour itinerary are subject to change with/without notice. **NST reserves the right to correct errors or omissions including but not limited to, fares, fees, and surcharges at any time.** Deposit: \$500 per person. Final Payment Due: 05/30/25. NST at its discretion, may use group and individual photos on its website, print, television, and various social media. † Early booking discount is per person. Purchase of NST's complete Air and Land Package is required. †† Earn rewards every time you refer a friend. For each "new-to-NST" customer you refer, both you and your referral can receive a \$25 discount off your next NST escorted group. **Special Assistance:** You must notify NST, at time of reservation, of any disability requiring special attention. NST reserves the right to cancel your booking or terminate your vacation if your special needs or disabilities are not suitable for the vacation or if you are not traveling with a companion who will provide all the assistance you require. **Wheelchair and electric scooter access outside of the USA is severely restricted.** 021325

