



**Japan.**  
Endless  
Discovery.

**JAL**  
**JAPAN AIRLINES**

**Off the Beaten Path: A Different Side of Japan**

# 2025 ULTIMATE HOKKAIDO, SHIRETOKO PENINSULA & SAPPORO AUTUMN FESTIVAL TOUR #2

Enjoy your choice of Japan Airlines' "Economy," "Premium Economy," or the affordable luxury of "Business" class service. Premium Economy class customers will begin their journey with a relaxing visit to JAL's "Sakura Lounge" and the brand new "Sakura Lounge - Hale" for Business class.

**11 Nights / 13 Days • 26 Meals (11 Breakfasts, 8 Lunches, 7 Dinners)**  
**Escorted from Honolulu • Includes an English-Speaking Local Guide**  
**Tour #2: September 26 – October 08, 2025**

**VISIT:** Haneda • Sapporo • Shiraoi • Tokachigawa • Ikeda • Lake Akan Shiretoko • Abashiri • Engaru • Asahikawa • Asahidake • Biei • Furano

**TOUR HIGHLIGHTS:** TV Tower • Former Government Building • Odori Park • Clock Tower Sapporo Autumn Festival • National Ainu Museum UPOPOY • Indigo Dyeing Experience Yuni Garden • Sahoro Bear Mountain • Fukuhara Sanso Garden • Boya Farm Sheep Dog Show Ikeda Wine Castle • Winery Tour and Tasting • Ryugetsu Sweetpia Garden • Lake Onneto Stroll Around the Ainu Kotan Area • Lake Akan Cruise • Lake Mashu Observatory The Road to Heaven Observatory • Oshin Koshin Waterfall • Shiretoko-toge Observation Deck Shiretoko National Park Nature Center • Shiretoko Five Lakes Wooden Pathways Lake Notoro Coral Grass • Omagari Lake Side Sunflower Park • Engaru Cosmos Flower Park Ginga Ryusei Waterfall • Kurodake Ropeway • Asahikawa Ramen Village Otokoyama Sake Brewery Museum • AEON MALL • Shirahige Waterfall • Blue Pond Tomita Farm • ROYCE' Cacao and Chocolate Town • Chitose Airport Domestic Terminal Shopping

**ONSEN HOT SPRINGS:**

- **Tokachigawa Onsen Daiichi Hotel:** One of the primeval hot spring "moor onsen" is nicknamed as "bijin-no-yu," a "hot spring of beauty." The amber color in this onsen hot spring is known as a natural body lotion and has been named as a Hokkaido Heritage Site.
- **Akan Yukunosato Tsuruga Wings Building:** One of the best public baths in Tsuruga, where you will find seven different bath facilities, along with the world's first insulated glass sauna.

- **Kitakobushi Shiretoko Hotel & Resort:** A large-scale Japanese resort hotel facing the harbor with splendid views of the Sea of Okhotsk from the public bath and the open-air bath on the top floor.
- **Abashiri Tsuruga Hokuten no Oka:** On the hilltops overlooking Lake Abashiri, this hotel offers open-air onsen hot spring baths, aromatherapy massages, and unique local cuisine. Rooms include a coffee maker with fresh beans and Ainu-inspired sleepwear.

**Non-Stop Travel Exclusive!**  
**DON'T MISS A THING!! WHISPER —**  
Wireless Tour Guide System!  
English narration directly to your ear!

**Non-Stop Travel**  
**Hokkaido Exclusive!**  
**CRABS — Pick'em "LIVE" from the tank!**  
Savor the sweet "freshly steamed" morsels!

## COMPLETE PACKAGE!

Includes Roundtrip Airfare from Honolulu, 11 Nights Hotel, 26 Meals, Tips for Local Tour Guides and Bus Drivers, All Taxes & Fees

## JAPAN AIRLINES: CHOICE OF CABINS

Treat yourself to a better vacation!

### JAL ECONOMY CLASS

**\$5,288\***

### JAL PREMIUM ECONOMY CLASS

**\$6,088\***

**HURRY! Only 6 Seats Available at this Price!!**

\*Premium Economy class seating is for flights between Honolulu and Japan only. Domestic Japan flights do not offer Premium Economy class seating.

### JAL BUSINESS CLASS

**\$7,688\***

**HURRY! Only 6 Seats Available at this Price!!**

**EARLY BOOKING DISCOUNT PER PERSON†**  
**Book by 04/15/25 & SAVE \$100**  
**Book by 05/30/25 & SAVE \$50**



Locally Owned & Operated  
Since 1985 — Mahalo Hawai'i!

615 Piikoi Street, Suite 102  
Honolulu, Hawai'i 96814

**593-0700**  
or Toll-Free  
**1-800-551-1226**

[www.nonstop.travel](http://www.nonstop.travel)

**Day 1: Fri, Sept 26** – HONOLULU. Depart Honolulu via Japan Airlines flt #73 at 12:45 pm.

**Day 2: Sat, Sept 27** – HANEDA. Arrive at the Haneda International Airport at 3:55 pm. After entry formalities, walk to your hotel connected to the airport terminal. Enjoy a buffet dinner at the hotel. HOTEL VILLA FONTAINE GRAND HANEDA AIRPORT (1 Night) (D)

**Day 3: Sun, Sept 28** – HANEDA – CHITOSE – SAPPORO. After a breakfast buffet at your hotel, transfer back to the Haneda airport terminal. Depart Haneda Domestic Airport via Japan Airlines flt #511 at 10:30 am and arrive at the Chitose Domestic Airport at 12:05 pm. Depart the airport. For lunch, **pick out "LIVE" crabs**\* from the tanks, to enjoy with a special kaisen don (fresh seafood over rice) lunch. Get a brief city tour, including the **TV Tower**, the **Former Government Office Building**, **Odori Park**, and **Clock Tower** before stopping at the hotel for a chance to rest before tonight's activities. This evening enjoy the **Sapporo Autumn Festival** at Odori Park. KEIO PLAZA HOTEL SAPPORO (2 Nights) (B, L)

\*One live crab for every 6th tour member.

**Day 4: Mon, Sept 29** – SAPPORO – SHIRAOI – SAPPORO. After breakfast, depart Sapporo for Shiraoi. Officially opened on July 12, 2020, the mission of the new **National Ainu Museum UPOPOY** is "to promote a proper understanding and awareness of Ainu history and culture in Japan and elsewhere out of respect for the dignity of the indigenous Ainu people, while contributing to the creation and development of new aspects of Ainu culture." Learn about the Ainu people and culture via short films shown on the large screen in the 96 seat theater, and through the various artifacts and displays set up in the exhibition rooms located on the 2nd floor of the museum. After lunch, **learn how to dye using indigo**. This will make a great souvenir of your trip! Enjoy dinner at a local restaurant before returning to the hotel for an evening of leisure. (B, L, D)

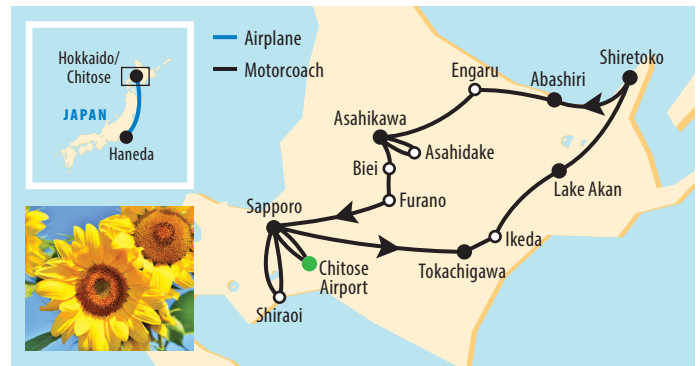
**Day 5: Tue, Sept 30** – SAPPORO – TOKACHIGAWA. Depart Sapporo for Tokachigawa. First stop today, is at **Yuni Garden** – for a chance to stretch your legs and view the various flowers in the garden. After lunch, visit **Sahoro Bear Mountain**. The clever viewing facilities include a boardwalk five meters above ground and on the included heavily fortified bus – that looks like it was built for *Jurassic Park* – cruise the park. The bears seem little fazed by both, and you're almost guaranteed to see at least one hanging around. **Fukuhara Sanso** is well-known as a good place to **see fall foliage**. Tonight soak in the **onsen hot springs**, before or after dinner at the hotel. The onsens – which are divided for men and women – allow you to enjoy the hot springs whether indoors or outdoors. The high-quality service and facilities are sure to become some of your fondest memories of your visit to Japan. TOKACHIGAWA ONSEN DAIICHI HOTEL (1 Night) (B, L, D)

**Day 6: Wed, Oct 01** – TOKACHIGAWA – IKEDA – LAKE AKAN. On the way to Ikeda, stop at **Boya Farm** for a fun-filled **sheep dog show**. Enjoy lunch and **learn about wine making** at the **Ikeda Wine Castle**. After lunch, a brief stop will be made at **Ryugetsu Sweetpia Garden**, famous for their gift sets of cookies and pastries. Next, visit **Lake Onneto**, about a 25 minute drive from Lake Akan and part of Akan National Park. While it isn't as famous with tourists as some of the other lakes in the area like Lake Mashu or Lake Akan, it certainly should be! Work up an appetite for dinner with a **stroll** around the nearby **Ainu Kotan Area**. This evening a special seasonal buffet will be served at your hotel. Enjoy the **onsen hot spring**. AKAN YUKUNOSATO TSURUGA WINGS BUILDING (1 Night) (B, L, D)

**Day 7: Thur, Oct 02** – LAKE AKAN – SHIRETOKO. This morning we're in for a real treat! The **sightseeing cruise** around **Lake Akan** is Akan's most popular tour. From the boat you can see the unspoiled primitive forest that shows natural beauty in each season. **Lake Mashu Observatory** is famous for its notorious fog, which often hangs over the water for the entire day (a rare phenomenon for a lake), hence its nickname "**foggy lake Mashu**." On the way to **Shiretoko**, check out "**The Road to Heaven**" from the **Observatory**. The **Oshin Koshin Waterfalls**, tall and magnificent, is one of the Eight Views of Shiretoko. "Oshinkoshin" translated from the Ainu language is literally "the beautifully forked waterfalls." Enjoy your buffet dinner and a soak in the **onsen hot springs**. KITAKOBUSHI SHIRETOKO HOTEL & RESORT (1 Night) (B, L, D)

**Day 8: Fri, Oct 03** – SHIRETOKO – ABASHIRI. Start the day taking in the view from the **Shiretoko-toge Observation Deck**. Next, explore the **Shiretoko National Park Nature Center** and learn about one of Japan's most pristine parks – which is home to 36 land and 22 marine mammals, as well as 285 bird species, including brown bears, Blakiston's fish owls, and orcas. Also visit the **Shiretoko Five Lakes Wooden Pathways**, before enjoying lunch at a local restaurant. Enjoy a buffet dinner at the hotel. Relax after dinner at the hotel **onsen**. ABASHIRI TSURUGA HOKUTEN NO OKA (1 Night) (B, L, D)

**Day 9: Sat, Oct 04** – ABASHIRI – ENGARU – ASAHIKAWA. This morning visit, **Lake Notoro** to see the **sango coral grass** and **Omagari Lake Side Sunflower Park**. After lunch, visit the **Engaru Cosmos**



**Flower Park** and view 10 million + cosmos flower in bloom. Enjoy dinner at a local restaurant, before arriving at the hotel for the evening. JR INN ASAHIKAWA (2 Nights) (B, L, D)

**Day 10: Sun, Oct 05** – ASAHIKAWA – ASAHIDAKE – ASAHIKAWA. After breakfast, visit the nearby **Ginga Ryusei Waterfall**. The word "ginga" means "the milky way" and the word "ryusei" means "a shooting star." Take in the view of autumn foliage from the **Kurodake Ropeway**. Enjoy a local favorite for lunch (on your own) at the **Asahikawa Ramen Village**, where you'll get to choose the type of ramen lunch you'll have from one of eight ramen shops. Asahikawa is known for their shoyu based broths, while Sapporo is known for its miso based broths and Hakodate for its salt based broths. Which one will you try? After lunch, stop at the **Otokoyama Sake Brewery Museum** for a **tour of the facilities and tasting of sake and other tasty products**. Return to the hotel for an evening of leisure. An AEON MALL is conveniently located next door for dining and shopping opportunities. (B)

**Day 11: Mon, Oct 06** – ASAHIDAKE – BIEI – FURANO – SAPPORO. Start the day at **Shirahige Falls**, a spectacular waterfall situated 600 meters above sea level in the town of Biei, southeast of Asahikawa. White curtains of water cascading through gaps in the cliff give this natural landmark its name, which means "white beard waterfall." The **Blue Pond**, located outside the onsen hot spring town of Shirogane Onsen, is named after its deep blue color, which it owes to natural minerals dissolved in the water area. **Tomita Farm** is simply the best spot to enjoy the **seasonal flowers in bloom**. Transfer to Sapporo, for an evening of leisure. KEIO PLAZA HOTEL SAPPORO (2 Nights) (B, L)

**Day 12: Tue, Oct 07** – SAPPORO. Day at leisure. Don't forget the shopping opportunities at Susukino Shopping Area. Or Tanuki Koji Shopping Arcade, the largest and oldest shopping arcade in Sapporo, which houses over 200 shops. (B)

**Day 13: Wed, Oct 08** – SAPPORO – CHITOSE – HONOLULU. After breakfast, take a tour of the new **ROYCE' Cacao and Chocolate Town** to learn how the famous ROYCE' chocolate treats are made. Receive a complimentary sample at the end of the tour. Depart for Chitose Airport for your flight home. We will have ample time to do some **last minute shopping** at the **Domestic Terminal** where you can pick up pre-packaged seafood and sweets for your omiyage gift list! Consisting of four floors of restaurants, shops and activities, there's something for everyone. Those with a sweet tooth will enjoy the Sweets Zone, where you can enjoy Hokkaido sweets in a spacious and relaxing setting, and the ROYCE' Chocolate World (factory, museum, shop, and bakery) and LeTAO Chocolatier. The kids (and those young at heart) will enjoy the Doramon Sky Park and Hello Kitty Happy Flight, which have an activity area, shop and café (fees may apply) or the Pokémon store. UniQo aims to provide customers with "ultimate casual clothes." And there are more than two dozen shops at the airport that specialize in various fresh, frozen, or dried seafood that can be eaten there or packed for you to bring home. Or you can relax in the airport onsen or movie theater (for a fee). Depart Chitose Domestic Airport via Japan Airlines flt #518 at 5:00 pm. Arrive at the Haneda Domestic Airport at 6:45 pm. Depart Haneda International Airport via Japan Airlines flt #74 at 9:05 pm and arrive in Honolulu at 9:35 am the same day. Aloha and welcome home! (B)

\* Fares are per person, USD based on double occupancy and include all airline taxes and fees. Airline fuel supplements, taxes and fees are subject to change and tour member is responsible for any increases. Some airline-imposed personal charges, including but not limited to baggage, priority boarding and special seating, may apply. For details visit [www.tripadvisor.com/AirlineFees](http://www.tripadvisor.com/AirlineFees). After initial deposit, a \$75 per person Non-Stop Travel (NST) Cancellation Fee will apply. Group departures may be cancelled, if there are less than 24 tour members. Final payment to NST for "non-cruiseline" Air and Land Package must be made by money order or personal check. NST does not guarantee that all tour members will fly together with Tour Manager. Tour Manager assignments, number of meals offered on tour, tour price, discount, and the "final" cruise or tour itinerary are subject to change with/without notice. **NST reserves the right to correct errors or omissions including but not limited to, fares, fees, and surcharges at any time.** Deposit: \$500 per person. Final Payment Due: 05/19/25. NST at its discretion, may use group and individual photos on its website, print, television, and various social media. † Early booking discount is per person. Purchase of NST's complete Air and Land Package is required. †† Earn rewards every time you refer a friend. For each "new-to-NST" customer you refer, both you and your referral can receive a \$25 discount off your next NST escorted group. **Special Assistance:** You must notify NST, at time of reservation, of any disability requiring special attention. NST reserves the right to cancel your booking or terminate your vacation if your special needs or disabilities are not suitable for the vacation or if you are not traveling with a companion who will provide all the assistance you require. **Wheelchair and electric scooter access outside of the USA is severely restricted.** 021325

