



**GLOBUS**  
Touring. Beyond.

# 2026 BEST OF NEW ZEALAND

**14 Nights / 16 Days Land Tour • Escorted From Honolulu**  
**October 14 – 29, 2026 • Tour Manager: Susan Hamada Yee**

**Featuring:** Auckland, Bay of Islands, Rotorua, Marton, Wellington, Christchurch, Arthur's Pass, Franz Josef, Queenstown & Excursion to Milford Sound

It's true that sheep outnumber people in New Zealand six to one, but lucky for ewe, this untamed land also boasts an impressive number of soaring mountains, lush rainforests, and stunning fiords. The North Island's Bay of Islands sets the stage for the abundance of spectacular sights you'll see on both of New Zealand's breathtaking islands. Rotorua's shooting geysers are only surpassed by the South Island's soaring Southern Alps, which you'll reach from charming Christchurch by way of a scenic bus ride. Throughout your tour of New Zealand, you'll have the opportunity to admire incredible views of the Franz Josef Glacier, warm your toes in natural hot springs, and partake in all of the fun that Queenstown, the "Adventure Capital of the World," has to offer. With so many ways to work up an appetite, you'll appreciate a special barbecue on a local farm and dinner at a New Zealand family's home. On this 14-day tour, you'll discover the best of New Zealand from top to bottom.

## Your Escorted Best of New Zealand Land Tour Includes:

Round trip Economy Airfare from Honolulu, 14 Nights Hotel Accommodations, 21 Meals (13 Breakfasts, 3 Lunches, 5 Dinners) & All Taxes and Fees

\* Fares are per person, USD based on double occupancy and include all airline taxes and fees. Airline fuel supplements, taxes and fees are subject to change and tour member is responsible for any increases. Some airline-imposed personal charges, including but not limited to baggage, priority boarding and special seating, may apply. For details visit [www.tripadvisor.com/AirlineFees](http://www.tripadvisor.com/AirlineFees). After initial deposit, a \$75 per person Non-Stop Travel (NST) cancellation fee may apply. Group departures may be cancelled, if there is less than 20 Tour Members. NST does not guarantee that all Tour Members will fly together with Tour Manager. Tour Manager assignments, number of meals offered on tour, tour price, discount, and the "final" cruise or tour itinerary are subject to change with/without notice. **NST reserves the right to correct errors or omissions including but not limited to, fares, fees and surcharges at any time.** Deposit: \$750 per person (\$250 is non-refundable). Final Payment Due: 06/05/26. Final payment to NST for air/transfer portion must be made by cash, check, or money order only. Final payment for land portion may be made by credit card. A New Zealand Visa or NZeTA is required -- price of this Visa or NZeTA is not included in the price of this tour. NST at its discretion, may use group and individual photos on its website, print, television, and various social media. †† Earn rewards every time you refer a friend. For each "new-to-NST" customer you refer, both you and your referral can receive a \$25 discount off your next NST escorted group. **Special Assistance:** You must notify NST, at time of reservation, of any disability requiring special attention. NST reserves the right to cancel your booking or terminate your vacation if your special needs or disabilities are not suitable for the vacation or if you are not traveling with a companion who will provide all the assistance you require. **Wheelchair and electric scooter access outside of the USA is severely restricted.** 010626

**A NON-STOP TRAVEL  
EXCLUSIVE OFFER!**

**SAVE \$250**

MUST RESERVE BY JANUARY 30, 2026

**COMPLETE  
PACKAGE!**

~~\$9,503\*~~

**\$9,253\***

INCLUDES ROUNDTRIP AIRFARE  
FROM HONOLULU, 14 NIGHTS  
HOTEL ACCOMMODATIONS,  
MEALS AND SIGHTSEEING AS  
INDICATED ON ITINERARY,  
ALL TRANSFERS, TAXES & FEES



**Locally Owned & Operated  
Since 1985 — Mahalo Hawai'i!**

**615 Piikoi Street, Suite 102  
Honolulu, Hawai'i 96814**

**593-0700**

**or Toll-Free  
1-800-551-1226**

**[www.nonstop.travel](http://www.nonstop.travel)**

Select Sightseeing is included in tour. Additional optional tours are available for purchase through Globus. Itinerary shown is based on Globus' 2026 tour. Tour itinerary and inclusions are subject to change at any time with or without notice by Globus.

**Day 1: Wed, Oct 14** – HONOLULU. Depart Honolulu.

**Day 2: Thur, Oct 15** – ARRIVE IN AUCKLAND, NEW ZEALAND. Welcome to Aotearoa, Māori for "land of the long white cloud." After completing arrival formalities, transfer by coach to the hotel in Auckland. PULLMAN AUCKLAND or Similar (2 Nights)

**Day 3: Fri, Oct 16** – AUCKLAND. Enjoy a day of leisure. This evening will have a **welcome briefing and dinner**. (B, D)

**Day 4: Sat, Oct 17** – AUCKLAND – BAY OF ISLANDS. Start your day with a sightseeing tour of Auckland, the "City of Sails." See bustling **Queen Street**, the **city's oldest park, Auckland Domain**, and historic **Parnell Village**. Continue to the **Bay of Islands**, known for its stunning beauty and history. Before arriving at your resort, visit the historic **Waitangi Treat House**. COPTHORNE HOTEL & RESORT or Similar (2 Nights) (B, D)

**Day 5: Sun, Oct 18** – BAY OF ISLANDS. This morning, embark on a **sightseeing cruise**. The remainder of the day is at leisure. You may wish to stroll the beach, explore some of the island's historic attractions, shop for souvenirs, or just relax at your hotel. (B)

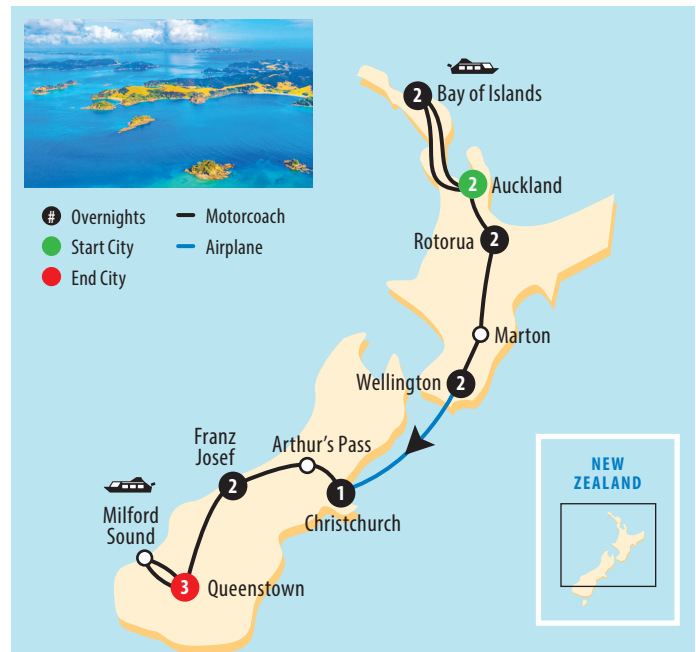
**Day 6: Mon, Oct 19** – BAY OF ISLANDS – ROTORUA. Today, travel throughout the **Bay of Plenty Region** to Rotorua, home to geothermal wonders, adventure activities, and a thriving Māori culture. NOVOTEL ROTORUA LAKESIDE or Similar (2 Nights) (B)

**Day 7: Tue, Oct 20** – ROTORUA. This morning starts with a guided tour and visit to the **National Kiwi Hatchery**. Next, visit **Te Puia**, Rotorua's most prominent thermal area. This afternoon is at your leisure. You may wish to relax in a natural hot spring, zipline through the forest, or board a floatplane for flightseeing of this beautiful region. This evening, join a New Zealand family for dinner in their home, a unique opportunity to interact with a local family and immerse yourself in New Zealand culture. Before the evening is over, you'll feel like part of the family. (B, D)

**Day 8: Wed, Oct 21** – ROTORUA – MARTON – WELLINGTON. Travel south today through rolling farmlands and pass massive **Lake Taupo**. After lunch, continue to Wellington, New Zealand's capital city. RYDGES WELLINGTON or Similar (2 Nights) (B, L)

**Day 9: Thur, Oct 22** – WELLINGTON. Our day begins with a sightseeing tour of Wellington. Take a **scenic cable-car ride**, visit the beautiful **botanic gardens**, see the famous **Beehive** and **Parliament buildings**, and enjoy **360-degree panoramic views** of the city and harbor from the top of **Mt. Victoria**. You'll also spend time at **Te Papa**, the **Museum of New Zealand**. The remainder of the day is yours to explore on your own. (B)

**Day 10: Fri, Oct 23** – WELLINGTON – CHRISTCHURCH. Fly to **Christchurch** located on New Zealand's south island. Christchurch was named after the city in England that has the same name and has a history of English heritage. A sightseeing tour highlights some of **Christchurch's famous landmarks** and spectacular **gardens**. This evening is at leisure. NOVOTEL CHRISTCHURCH CATHEDRAL SQUARE or Similar (1 Night) (B)



**Day 11: Sat, Oct 24** – CHRISTCHURCH – ARTHUR'S PASS – FRANZ JOSEF. Today, **drive through** one of the world's most **scenic journeys from Christchurch to Arthur's Pass**. Along the way, **cruise on the Haast River** with a serene **jet boat ride through a glacial valley** in the UNESCO World Heritage Area. Spend the next two nights in the small town of Franz Josef, located at the base of the impressive **Franz Josef Glacier**. SCENIC HOTEL FRANZ JOSEF GLACIER or Similar (2 Nights) (B, D)

**Day 12: Sun, Oct 25** – FRANZ JOSEF. This morning, explore this spectacular UNESCO World Heritage Area. Admire incredible views of the Franz Josef Glacier on a **locally guided tour**. The remainder of the day is at your leisure. (B)

**Day 13: Mon, Oct 26** – FRANZ JOSEF – QUEENSTOWN. Our journey today takes us along the coast and the Tasman Sea. Climb through rainforests and over **Haast Pass**, and after lunch, arrive in Queenstown, the "Adventure Capital of the World." Upon arrival, enjoy a **tour and a tasting at a local winery**. Tonight, you're free to enjoy dinner at one of Queenstown's many restaurants or cafes and sample some of the regional wines. RAMADA QUEENSTOWN CENTRAL or Similar (3 Nights) (B, L)

**Day 14: Tue, Oct 27** – QUEENSTOWN – EXCURSION TO MILFORD SOUND. Today, travel into scenic **Fiordland National Park**. Boasting some of the most breathtaking scenery in the world, the region of New Zealand has been named as a UNESCO World Heritage Site and was famously described by author, Rudyard Kipling, as the "eighth wonder of the world." Late evening return to Queenstown. (B, L)

**NOTE:** The excursion to Milford Sound may happen on Day 15 depending on weather and road conditions today.

**Day 15: Wed, Oct 28** – QUEENSTOWN. Enjoy a full day at leisure in one of New Zealand's prettiest towns. Tour some of the sites used to film The Lord of the Rings trilogy, shop for souvenirs, or take a thrilling jetboat ride on the dart river. This evening, your Tour Director hosts a **special farewell dinner**. (B, D)

**Day 16: Thur, Oct 29** – QUEENSTOWN – HONOLULU. Depart Queenstown. Arrive Honolulu. Aloha and welcome home! (B)