



Japan.
Endless
Discovery.



**JAPAN
AIRLINES**

See More & Experience More With Non-Stop Travel!

2026 HOKKAIDO SNOW FESTIVAL PLUS KAWAZU CHERRY BLOSSOMS & ATAMI PLUM BLOSSOMS FESTIVAL TOUR

EXPERIENCE 4 WINTER FESTIVALS:

Lake Shikotsu Ice Festival, Sapporo Snow Festival,
Asahikawa Winter Festival & Otaru Snow Light Path Festival

Enjoy your choice of Japan Airlines' "Economy," "Premium Economy," or the affordable luxury of Business" class service. Premium Economy and Business class customers will begin their journey with a relaxing visit to JAL's "Sakura Lounge" and the "Sakura Lounge - Hale" for Business class.

12 Nights / 14 Days • 24 Meals (12 Breakfasts, 6 Lunches, 6 Dinners)
Escorted from Honolulu • Includes an English-Speaking Local Guide
February 02 – 15, 2026 • Tour Manager: Gwen Macion

VISIT:

Haneda • Lake Shikotsu • Noboribetsu • Shiraoi • Sapporo • Ishikari
Asahikawa • Otaru • Yokohama • Kawazu • Atami • Tokyo

ENJOY 3 ONSEN HOT SPRINGS OR LARGE PUBLIC BATH FACILITIES:

Noboribetsu Daiichi Takimotokan • OMO7 Asahikawa by Hoshino Resorts • Atami Korakuen Hotel

Non-Stop Travel Exclusive!

HOTEL VILLA FONTAINE GRAND HANEDA AIRPORT (Haneda Airport — 1 Night): The hotel is conveniently located just a one minute walk from Terminal 3. Japan is one of the world's leading onsen hot spring countries, and have long been loved by the Japanese for their ability to prevent disease, promote health, bestow beauty and anti-aging benefits, and soothe the body and mind. Shake the weariness of the 9½ hour flight as you relax in the onsen (for the nominal fee of 2,000 yen). Or get an introduction to Japanese convenience stores at Lawson (open 24 hours) on the 2nd floor.

Non-Stop Travel Exclusives!

SAPPORO SNOW FESTIVAL (DAY & EVENING VIEWING)

4 nights hotel stay
in Sapporo

CRABS — PICK'EM "LIVE" FROM THE TANK!

Savor the sweet freshly
steamed morsels!

ICE CREAM MAKING

Made with fresh
Hokkaido milk!

INCLUDES COMPLIMENTARY SNOW/ICE CLEATS FOR ALL TOUR MEMBERS (\$20 VALUE)

COMPLETE PACKAGE!

Includes Roundtrip Airfare from Honolulu,
12 Nights Hotel, 24 Meals, Tips for Local Tour
Guides and Bus Drivers, All Taxes & Fees

JAPAN AIRLINES: CHOICE OF CABINS

Treat yourself to a better vacation!

JAL ECONOMY CLASS

\$6,588*

JAL PREMIUM ECONOMY CLASS

\$7,588*

HURRY! Only 6 Seats Available at this Price!!

*Premium Economy class seating is for flights between Honolulu and Japan only. Domestic Japan flights do not offer Premium Economy class seating.

JAL BUSINESS CLASS

\$9,388*

HURRY! Only 6 Seats Available at this Price!!

EARLY BOOKING DISCOUNT PER PERSON†

Book by 06/30/25 & SAVE \$100

Book by 08/29/25 & SAVE \$50

Non-Stop Travel Exclusive!

DON'T MISS A THING!!

**WHISPER — Wireless Tour
Guide System!** English narration
directly to your ear!

Day 1: Mon, Feb 02 — HONOLULU. Depart Honolulu via Japan Airlines flt #71 at 3:45 pm.

Day 2: Tue, Feb 03 — HANEDA. Arrive at the Haneda International Airport at 8:10 pm. After entry formalities, walk to your hotel connected to the airport terminal. Enjoy dinner at the hotel. HOTEL VILLA FONTAINE GRAND HANEDA AIRPORT (1 Night) (D)

Day 3: Wed, Feb 04 — HANEDA — CHITOSE — LAKE SHIKOTSU — NOBORIBETSU. After a breakfast buffet at your hotel, transfer back to the Haneda airport terminal. Enjoy a bento box at the domestic departure gate. Depart Haneda Domestic Airport via Japan Airlines flt #511 at 10:20 am and arrive at the Chitose Domestic Airport at 11:55 am. Upon arrival in Chitose, depart the airport for the **LAKE SHIKOTSU ICE FESTIVAL**,⁹ a fantastic world of ice featuring various snow and ice sculptures created from the water of the nearby lake. Arrive in Noboribetsu. Enjoy a buffet dinner at the hotel tonight. Tonight, enjoy a relaxing **soak in the healing waters of Hokkaido's onsen hot springs**. Don't miss out! The onsens — which are divided for men and women — allow you to enjoy the hot springs whether indoors or outdoors. The high-quality service and facilities are sure to become some of your fondest memories of your visit to Japan. NOBORIBETSU DAIICHI TAKIMOTOKAN (1 Night) (B, L, D)

Day 4: Thur, Feb 05 — NOBORIBETSU — SHIRAOI — SAPPORO. After breakfast, depart Noboribetsu for Shiraoi and the **National Ainu Museum UPOPOY**. Officially opened on July 12, 2020, the mission of the new National Ainu Museum UPOPOY is "to promote a proper understanding and awareness of Ainu history and culture in Japan and elsewhere out of respect for the dignity of the indigenous Ainu people, while contributing to the creation and development of new aspects of Ainu culture." Learn about the Ainu people and culture via short films shown on the large screen in the 96 seat theater, and through the various artifacts and displays set up in the exhibition rooms located on the 2nd floor of the museum. After lunch, go to **Koropokkuru**, where you will **learn how to make ice cream** using fresh Hokkaido milk! Transfer to Sapporo. Enjoy dinner at a local restaurant before arriving at the hotel for the evening. KEIO PLAZA SAPPORO (4 Nights) (B, L, D)

Day 5: Fri, Feb 06 — SAPPORO — ISHIKARI — SAPPORO. After breakfast, begin the day with a tour of the new **ROYCE' Cacao and Chocolate Town** to learn how the famous ROYCE' chocolate treats are made. Receive a complimentary sample at the end of the tour. For lunch, stop at a local **Wholesale Seafood Market** where an abundance of fresh seafood and the freshest local products can be found. While there, **pick out "LIVE" crabs** from the tanks, to enjoy with a special kaisen don (fresh seafood over rice) lunch. After lunch, take a drive-by sightseeing tour of Sapporo — including the **TV Tower**, the **Clock Tower**, and the **Former Government Office Building**. Next, take in the wonders of the **SAPPORO SNOW FESTIVAL**⁹ at Odori Park and in the Susukino area. The Sapporo Snow Festival was started in 1950, when high school students built a few snow statues and it has since developed into a WORLD-CLASS EVENT attracting more than two million visitors. The Local Guide will spend the some time showcasing the highlights of the festival. The remainder of the

evening is free to explore more of Sapporo on your own. Don't miss out on the seeing the festival at night, when some of the sculptures are illuminated with lights. (B, L)

⁹One live crab for every 6th tour member. Live crab subject to weather conditions and availability.

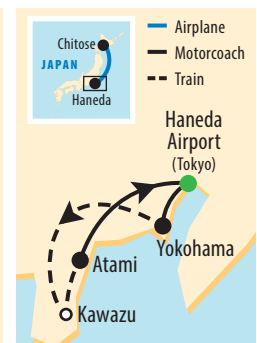
Day 6: Sat, Feb 07 — SAPPORO. Day of leisure. The perfect opportunity to explore more of the **SAPPORO SNOW FESTIVAL**⁹ on your own. Don't forget the shopping opportunities at Susukino shopping area, or the Tanuki Koji Shopping Arcade, the largest and oldest shopping arcade in Sapporo, which houses over 200 shops. (B)

Day 7: Sun, Feb 08 — SAPPORO. Day of leisure. The perfect opportunity to explore more of the **SAPPORO SNOW FESTIVAL**⁹ on your own. (B)

Day 8: Mon, Feb 09 — SAPPORO — ASAHIKAWA. After breakfast, depart Sapporo. En route to Asahikawa, stop at the **Sunagawa Highway Oasis**, a shopper's paradise. Warm yourself with lunch (on your own) at the **Asahikawa Ramen Village**, where you'll get to choose the type of ramen lunch you'll have from one of eight ramen shops. Asahikawa is known for their shoyu based broths, while Sapporo is known for its miso based broths and Hakodate for its salt based broths. Which one will you try? After lunch, visit the **Asahiyama Zoo** to observe the "**Penguin Walk**," in which the zoo's penguins walk along a 500 meter snow covered walkway, a way for the zoo to keep the birds fit during the winter months. While the penguins have a tendency to keep together as a group during these walks, sometimes some wander off course towards the crowd of visitors, and need to be "reminded" where they are going. Have your camera ready as these birds waddle pass you on their daily walk. Then experience one of the most popular winter festivals in Hokkaido, the **ASAHIKAWA WINTER FESTIVAL**⁹. As Hokkaido's second largest winter festival, after Sapporo's Snow Festival, Asahikawa Winter Festival boasts one of the biggest snow sculptures. Each year, one massive sculpture is made as a stage for music or other performances. The giant sculpture has a different theme each year. What will the theme be this year? Will it top the giant sculpture built in 1994 which made it into the book of Guinness World Records as the largest snow construction ever built? Enjoy dinner at a local restaurant before arriving at the hotel. Don't forget to take a **soak in the hotel's large public bath**. OMO7 ASAHIKAWA BY HOSHINO RESORTS (1 Night) (B, D)

Day 9: Tue, Feb 10 — ASAHIKAWA — OTARU. After breakfast, depart Asahikawa for Otaru. After lunch, stop at **Tanaka Sake Brewery**. Learn how sake is made and sample some of their tasty products. Upon arrival in Otaru, take a stroll along the **Otaru Canal**. Next, stop at the **Otaru Music Box Museum**. A visit to the **Kitaichi Glass Company** will delight your eyes with beautiful creations. Then take in the sights of the **OTARU SNOW LIGHT PATH FESTIVAL**⁹. The remainder of the evening is at your leisure. GRAND PARK OTARU (1 Night) (B, L)

Day 10: Wed, Feb 11 — OTARU — CHITOSE — HANEDA — YOKOHAMA. After breakfast, depart Otaru for the Chitose Airport. Depart the Chitose Domestic Airport via Japan Airlines flt #512 at 2:05 pm and arrive at the Haneda Domestic Airport at 3:50 pm. Upon arrival in Haneda, depart for Yokohama's **Chinatown**, the largest in Japan. Take a stroll along the narrow and colorful streets of Chinatown. After dinner at a



local restaurant, transfer to the hotel for the evening. YOKOHAMA BAY SHERATON HOTEL & TOWERS (1 Night) (B, D)

Day 11: Thur, Feb 12 — YOKOHAMA — KAWAZU — ATAMI. After breakfast walk to Yokohama Train Station where we will board an **Odoriko Limited Express Train** to Kawazu on the beautiful Izu Peninsula. As soon as you step off the train in Kawazu you are greeted by the aromas of freshly roasted corn, grilled chicken and squid from the nearby food stalls. Enjoy a day at the **KAWAZU CHERRY BLOSSOM FESTIVAL**⁹. The pink of the Kawazu cherry blossom (sakura) and the yellow of the field mustard which is lined along the Kawazu sakura lane create a vivid and fantastic contrast of colors. Next, board the **Odoriko Limited Express Train** to Atami. Enjoy dinner at the hotel. Tonight is your **last chance to warm up in an onsen**. Don't miss out! ATAMI KORAKUEN HOTEL (1 Night) (B, D)

Day 12: Fri, Feb 13 — ATAMI — TOKYO. Begin the day at the Atami Baien (Plum Garden), which opened in 1886 and is the home to some of Japan's earliest blooming plum tree varieties. The annual **ATAMI PLUM BLOSSOM FESTIVAL**⁹ showcases close to 500 plum trees, in 59 varieties — blooming from the palest of pinks to the boldest of blush. During the festival, special footbaths are installed in the garden and souvenir shops are opened. After lunch, **pick strawberries** for a fresh and sweet dessert. Have you ever visited a shotengai before? "Shotengai" refers to a covered shopping arcade or shopping street in Japan that is typically closed to traffic. Take time to explore the approximately 50 shops that make up **Heiwadori Shotengai**. Heiwadori is a great street for snacking on snacks like kamaboko (a type of fishcake), satsuma-age (fried fishcakes), and senbei (rice crackers). It's also known for onsen manju, one of Atami's most popular souvenirs. These sweet buns, which are usually filled with bean paste, are traditionally cooked in onsen steam — hence the name — fortunately, you do not have to venture to the hot springs to savor these treats. Arrive at the hotel for an evening of leisure. Located in the center of **Shinjuku** — the hub of shopping and restaurants in Tokyo — there are numerous options for dining (and shopping) tonight. KEIO PLAZA HOTEL TOKYO (2 Nights) (B, L)

Day 13: Sat, Feb 14 — TOKYO. Day at leisure. Enjoy the various shopping and dining available in the bustling Shinjuku area. Your Local Guide will be available to assist as needed. Perfect day to relax and/or visit with family and friends in Tokyo. (B)

Day 14: Sun, Feb 15 — TOKYO — HANEDA — HONOLULU. Today's highlight will be a hands-on **sushi making session**, which will yield your delicious lunch. **Asakusa** is the center of Tokyo's shitamachi (literally "low city"), one of Tokyo's districts, where an atmosphere of the Tokyo of past decades survives. Asakusa's Main attraction is **Sensoji**, a very popular Buddhist temple, built in the 7th century. The temple is approached via the **Nakamise**, a shopping street that has been providing temple visitors with a variety of traditional local snacks and tourist souvenirs for centuries. Lastly visit **Ameyoko**, a busy market street along the Yamanote Line tracks between Okachimachi and Ueno Stations. The name "Ameyoko" is a short form for "Ameya Yokocho" ("candy store alley"), as candies were traditionally sold there. Alternatively, "Ame" also stands for "America," because a lot of American products used to be available there when the street was the site of a black market in the years following WWII. Today, various products such as clothes, bags, cosmetics, fresh fish, dried food, and spices are sold along Ameyoko. Transfer to the Haneda Airport for the flight home. Depart Haneda International Airport via Japan Airlines flt #72 at 9:55 pm and arrive Honolulu at 9:40 am the same day. Aloha and welcome home! (B, L)

⁹ Fares are per person, USD based on double occupancy and include all airline taxes and fees. Airline fuel supplements, taxes and fees are subject to change and tour member is responsible for any increases. Some airline-imposed personal charges, including but not limited to baggage, priority boarding and special seating, may apply. For details visit www.tripadvisor.com/AirlineFees. After initial deposit, a \$75 per person Non-Stop Travel (NST) cancellation fee will apply. Group departures may be cancelled, if there are less than 24 tour members. Final payment to NST for "non-cruise-line" air and land package must be made by money order or personal check. NST does not guarantee that all tour members will fly together with Tour Manager. Tour Manager assignments, number of meals offered on tour, tour price, discount, and the "final" cruise or tour itinerary are subject to change with/without notice. NST reserves the right to correct errors or omissions including but not limited to, fares, fees, and surcharges at any time. Deposit: \$500 per person. Final payment due: 09/25/25. NST at its discretion, may use group and individual photos on its website, print, television, and various social media. † Early booking discount is per person. Purchase of NST's complete air and land package is required. ‡ Snow festival schedules and activities are subject to final festival date confirmation. Daily tour itineraries are also subject to change with or without notice. Cherry blossom and plum blossom viewing is subject to weather conditions and is NOT guaranteed. †† Earn rewards every time you refer a friend. For each "New-to-NST" customer you refer, both you and your referral can receive a \$25 discount off your next NST escorted group. **Special Assistance:** You must notify NST, at time of reservation, of any disability requiring special attention. NST reserves the right to cancel your booking or terminate your vacation if your special needs or disabilities are not suitable for the vacation or if you are not traveling with a companion who will provide all the assistance you require. **Wheelchair and electric scooter access outside of the USA is severely restricted.** 052825



Locally Owned & Operated Since 1985 — Mahalo Hawai'i!
615 Piikoi Street, Suite 102 • Honolulu, Hawai'i 96814
593-0700 or Toll-Free 1-800-551-1226
www.nonstop.travel

