



2026 PERU SPLENDORS WITH MACHU PICCHU, PERUVIAN AMAZON RAINFOREST & GALAPAGOS CRUISE TOUR

18 Nights / 20 Days • Escorted from Honolulu

Travel to Lima, Peru & Return from Guayaquil, Ecuador

Tour #1: April 06 – 25, 2026 • Tour Manager: Jackie Wehrfritz

Tour #2: April 20 – May 09, 2026 • Tour Manager: Laureen Chu

Tour #3: August 10 – 29, 2026 • Tour Manager: Lisa McKee

Tour #4: September 07 – 26, 2026 • Tour Manager: Andy Lau

Tour #5: November 16 – December 05, 2026 • Tour Manager: Wally Mau

Limited to just 24 Tour Members!

COUNTRIES: Peru & Ecuador

FEATURING: Lima • Puerto Maldonado • Hacienda Concepción

Cusco • Sacred Valley • Machu Picchu • Quito • Baltra • Santa Cruz Island

Genovesa Island • South Plaza Island • Santa Fé Island • Bachas Beach • Guayaquil

Love a good mystery? This 18-day vacation to Peru is the perfect escape to delve into the world's most intriguing lost and found story. Featuring not one, but two days behind the misty gates of Machu Picchu, this below-the-equator tour takes you high into the Andes and deeper inside the Lost City of the Incas to unearth its centuries-old secrets. Navigating the cryptic maze of trails, temples, and terraces in the world's most famous forgotten city is one for the memory books. Other great finds on this tantalizing tour of Peru? Up-close encounters with llamas, alpacas, and other Sacred Valley locals; vibrant, handwoven textiles in the former Inca Empire capital of Cusco; bold, multicultural cuisine in the foodie capital of Lima; and a warm welcome inside a traditional family home for an authentic taste of Peruvian hospitality. There's more to squawk about when you combine the wonder of the Andes with the wilderness of the Amazon. Canopy walks, canoe rides, and higher speed motorboat jaunts offer varying perspectives of the macaws, monkeys, and myriad of other rainforest creatures you'll discover when you start your tour of Peru in the Amazon. When satisfying your inner historian, don't forget your inner naturalist. Cruise around the famed Galapagos archipelago, where you'll share the shores with every native species from the blue-footed boobies to the pint-size penguin. A meet-and-greet with a colony of sea lions seals the deal on this wondrous extension to your Peru vacation.

NON-STOP TRAVEL EXCLUSIVE BONUSES!



Pisco Sour Cocktail
Party in the Peruvian
Rainforest



Roasted Guinea Pig "Cuy"
Luncheon in Cusco



Mauricio Yonfa,
Globus Tour Director —
The Best in South America!

COMPLETE PACKAGES!

FROM ~~\$11,558*~~

\$11,308*

ROUNDTrip AIRFARE FROM HONOLULU, 15 NIGHTS
HOTEL, 3 NIGHTS CRUISE ON THE GALAPAGOS
LEGEND, INTRA-TOUR FLIGHTS, MEALS AND
SIGHTSEEING AS INDICATED ON ITINERARY,
TRANSFERS, TAXES AND FEES AND PRE-PAID
GRATUITIES FOR GLOBUS TOUR DIRECTOR, DRIVER
AND LOCAL GUIDES DURING THE LAND TOUR

NON-STOP TRAVEL EXCLUSIVE OFFER!

**SAVE \$250
PER PERSON**

MUST RESERVE BY MAY 30, 2025

Pre-Paid Gratuities for
Globus Tour Director, Driver and
Local Guides During the Land Tour⁹



Select Sightseeing is included in tour. Additional Optional Tours are available for purchase through Globus. Itinerary shown is based on Globus' 2026 tour. Tour itinerary and inclusions are subject to change at any time with or without notice by Globus.

Day 1: Mon – HONOLULU. Depart Honolulu.

Day 2: Tue – LIMA, PERU. Welcome to Lima! After completing arrival formalities, meet your Globus representative and transfer by coach to the hotel in Lima. WYNDHAM COSTA DEL SOL LIMA AIRPORT or Similar (2 Nights)

Day 3: Wed – LIMA, PERU. Day at leisure. (B)

Day 4: Thur – LIMA – PUERTO MALDONADO – HACIENDA CONCEPCIÓN. **Fly to Puerto Maldonado**, capital of Madre de Dios and the entry to Peru's Amazon Jungle. Embark on a **motorboat ride up the Madre de Dios River** to **view the exotic wildlife**. Arrive at your Amazon Jungle lodge and meet your Naturalist. After settling in, head out with our Naturalist for a **walk among nature trails** to learn about **primary and secondary rainforest**. At dusk, take a **canoe ride** to learn about the **Amazonia River ecosystems, nocturnal animals' activity**, and the **southern constellations**. INKATERRA HACIENDA CONCEPCIÓN or Similar (3 Nights) (B, L, D)

Day 5: Fri – HACIENDA CONCEPCIÓN. This morning, take a **nature walk** with your Naturalist through **Tambopata National Reserve** and a **dugout canoe ride** around **Lake Sandoval** in search of **native flora and fauna**. Learn about the reserve's conservation efforts and the animals that inhabit this lake, such as the **endangered giant river otters, blue and yellow macaws, red howler monkeys, and black caimans**. This afternoon, explore the rainforest on a **canopy walkway** consisting of **seven suspension bridges hanging more than 100 feet from the ground**. From the treetops, keep an eye out for **white-throated toucans, woodpeckers, trogons, squirrel monkeys, and the three-toed sloth**. After night falls, your Naturalist introduces you to the **nocturnal animals of the Amazon**. (B, L, D)

Day 6: Sat – HACIENDA CONCEPCIÓN. A short **boat ride** brings you to a **native farm** where farmers use **ancient methods to grow crops**. Learn about local **cultivation techniques**,



intriguing **medicinal uses** by local communities, and **taste some of the produce**. This afternoon, you can **fish for piranha** (weather dependent) like the local indigenous communities do and **visit an Inland Clay Lick** to **observe wildlife from a blind** to observe the **normal routine of the fauna** without disturbing the environment. (B, L, D)

Day 7: Sun – HACIENDA CONCEPCIÓN – PUERTO MALDONADO – LIMA. Return to Puerto Maldonado and **fly to Lima** where you will be met your Globus representative. WYNDHAM COSTA DEL SOL LIMA AIRPORT or Similar (2 Nights) (B)

Day 8: Mon – LIMA. This afternoon, your Local Guide focuses on the **city's colonial heritage** during a walking tour. Start at the **Plaza de Armas** to see the **Government Palace** and the **cathedral**. From here, stroll to the venerable **San Francisco Monastery** with its splendid 17th century cloister murals. For a special treat, **stop at a local food market** to get a real taste of life for the local people. This evening, enjoy dinner at one of Lima's Peruvian restaurants with your fellow travel companions. (B, D)

Day 9 Tue – LIMA – CUSCO – SACRED VALLEY. **Fly to Cusco**, the impressive Andean city that was once the capital of the Inca Empire. Head into the **Sacred Valley of the Incas** and visit the semi-circular **Kenko Amphitheater** with its **stone altars and labyrinth of passages** and see the ancient site of **Puca Pucara**. Also in the Sacred Valley, experience an **El Pago a la Tierra**, or Mother Earth Ceremony, **performed by a local shaman**. Meet local families who preserve the **ancient technique of Pre-Columbian weaving** using South American **camelid fleece**. This is your chance to **get up close** to the various camelids, including **alpaca, llama, guanaco, and vicuña**, indigenous to the region. Continue to **Pisac**, an old mountain village, where you will have **free time to shop** for local wares, such as alpaca sweater and blankets, jewelry, or hand-painted ornamental dishes and vases at its famous market. Stay in the Sacred Valley tonight, with dinner at the hotel. SONESTA POSADAS DEL INCA – SACRED VALLEY – YUCAY or Similar (1 Night) (B, L, D)

Day 10: Wed – SACRED VALLEY – MACHU PICCHU. This morning, visit the **Inca fortress of Ollantaytambo**, followed by a **visit to a local home**, meet some of the area's families and experience their way of life in the Sacred Valley. Then, board the **Vistadome Train** for a scenic journey through the lush **Urubamba Valley**. Upon arrival, ascend the mountainside to legendary **Machu Picchu, the "Lost City of the Incas."** Your Local Guide will introduce this intact fortress with its temple remains, holy houses, and mile-long aqueduct, and will bring



you closer to the mysteries still hidden in these amazing structures. Tonight you may wish to try a pisco sour (a traditional Peruvian cocktail) or an inka kola, before the included dinner. EL MAPI BY INKATERRA or Similar (1 Night) (B, D)

Day 11: Thur — MACHU PICCHU — CUSCO. A **morning at leisure** in Machu Picchu allows you to **wake up early to see the sunrise over Machu Picchu** with your **second included entrance to the ruins**. After lunch, **return to the Sacred Valley by train** and continue to Cusco. SONESTA HOTEL CUSCO or Similar (2 Nights) (B, L)

Day 12: Fri — CUSCO. On your guided sightseeing tour of Cusco today, learn more about the **Inca and Spanish influence**. Begin at the heart of Cusco in the **Plaza de Armas (main square)**, with a visit to the imposing Cathedral, where construction began in 1550 and was finally completed 100 years later. **Join a traditional Pasacalle** through the streets of Cusco before continuing to **Koricancha** and the **Santo Domingo Monastery** and see how the two sites have become one. The **Temple of the Sun** at Koricancha was once **the most important Inca site, dedicated to the worship of the Sun**. The walls, altars, and decorations were all said to be **covered in gold** — until the Spaniards looted the temple and then built the contrasting **Baroque Santo Domingo Monastery** on top of the temple's foundations. Also visit the **Temple of Sacsayhuaman**, perched on a hillside overlooking Cusco. It remains unfathomable how and when this **fortress of gigantic stones** — with some **blocks weighing more than 350 tons** — was built. This evening, your Tour Director hosts a festive **Farewell Dinner** at a local restaurant. (B, D)

Day 13: Sat — CUSCO — LIMA — QUITO, ECUADOR. **Fly to Quito** where you will be met by a Globus representative. Free time this evening. HILTON COLON QUITO or Similar (2 Nights) (B)

Day 14: Sun — QUITO. On an included city tour with a Local Guide, see **Independence Square** with its **Cathedral** and **San Francisco Plaza Church**, and the **Basilica**. (B)

Day 15: Mon — QUITO — BALTRA — SANTA CRUZ ISLAND — EMBARK GALAPAGOS LEGEND — GALAPAGOS CRUISING. **Fly to Baltra** and visit the highlands of **Santa Cruz**, marked by extinct volcanoes, lava tubes, and astonishing plant life. Here, witness **giant tortoises** in a nature reserve and learn about **efforts to conserve** these ancient creatures. Continue to the port where you will **board the Galapagos Legend** for your **3-night cruise**. GALAPAGOS LEGEND (3 Nights) (B, L, D)



Day 16: Tue — CRUISING: GENOVESA ISLAND. Your Naturalist guided tour takes you up **Prince Philip's Steps**, where you will see **large nesting colonies of Nazca and red-footed boobies**, as well as many other fascinating feathered locals. After lunch on board, visit **Darwin Bay** to observe **frigate birds, red-footed boobies, herons, lava gulls**, and many other bird species. At the **tidal lagoon** you may also see the **rarest gull in the world**, the endemic **lava gull**. (B, L, D)

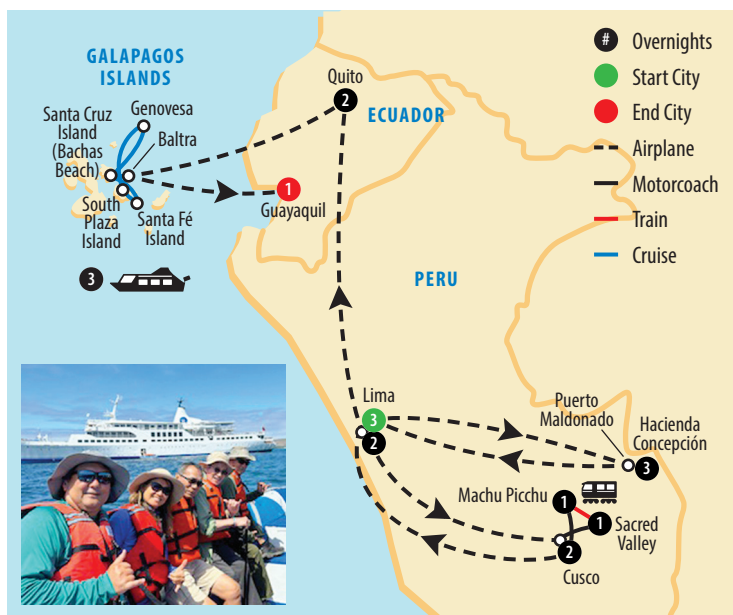
Day 17: Wed — CRUISING: SOUTH PLAZA AND SANTA FÉ ISLANDS. On **South Plaza Island**, take a walk through an impressive **cactus forest** populated with **land and marine iguanas**. Due to the proximity of land iguanas and marine iguanas here, this is the **only place on Earth** where you will find the **Galapagos hybrid iguana**. From the summit, watch for **tropic birds, Nazca and blue-footed boobies**, and **swallow-tailed gulls**. On **Santa Fé**, a large **sea lion colony** greets you on its white-sand beach. Walk through a cactus forest in search of the endemic **Santa Fé land iguana**, the largest in the islands. This island is home to a number of endemic species, including the **Galapagos hawk, Galapagos snake**, a variety of finches, and one of the four species of **Galapagos mockingbirds**. You also have time to **snorkel in the turquoise waters** with **sea lions, turtles, reef sharks, and spotted eagle rays**. (B, L, D)

Day 18: Thur — CRUISING: BACHAS BEACH — BALTRA — DISEMBARK GALAPAGOS LEGEND — GUAYAQUIL. Your final visit takes you to **Bachas Beach**, named for some wrecked WWII barges whose ribs are still visible in the sand. This site offers great swimming, a lovely walk along the shore, and a visit to a lagoon with wading birds, marine iguanas, and sometimes flamingos. The area is also a **frequent nesting site for green turtles**. Later, disembark and **fly to Guayaquil**. HILTON COLON GUAYAQUIL or Similar (1 Night) (B)

Day 19: Fri — GUAYAQUIL — U.S. MAINLAND. Your South America Adventure ends this morning. Depart South America for the U.S. Mainland. Transfer to hotel for your overnight stay. HOTEL IN U.S. MAINLAND (1 Night)

Day 20: Sat — U.S. MAINLAND — HONOLULU. Depart U.S. Mainland. Arrive Honolulu. Aloha and welcome home!

*Experience something new!
Hurry, book early and SAVE! Call today!!*



* Fares are per person, USD based on double occupancy and include all airline taxes and fees. Airline fuel supplements, taxes and fees are subject to change and tour member is responsible for any increases. Some airline-imposed personal charges, including but not limited to baggage, priority boarding and special seating, may apply. For details visit www.tripadvisor.com/AirlineFees. After initial deposit, a \$75 per person Non-Stop Travel (NST) cancellation fee may apply. Group departures may be cancelled, if there is less than 20 Tour Members. NST does not guarantee that all Tour Members will fly together with Tour Manager. Tour Manager assignments, number of meals offered on tour, tour price, discount, and the "final" cruise or tour itinerary are subject to change with/without notice. **NST reserves the right to correct errors or omissions including but not limited to, fares, fees and surcharges at any time.** Deposit: 750 per person (\$250 is non-refundable). Final payment to NST for air/transfer portion must be made by cash, check, or money order only. Final payment for land portion may be made by credit card. NST at its discretion, may use group and individual photos on its website, print, television, and various social media. ♦ **Gratuities for Naturalist and Ship Crew during Galapagos cruise and Amazon portion is not included and must be paid directly while on tour.** †† Earn rewards every time you refer a friend. For each "new-to-NST" customer you refer, both you and your referral can receive a \$25 discount off your next NST escorted group. **Special Assistance:** You must notify NST, at time of reservation, of any disability requiring special attention. NST reserves the right to cancel your booking or terminate your vacation if your special needs or disabilities are not suitable for the vacation or if you are not traveling with a companion who will provide all the assistance you require. **Wheelchair and electric scooter access outside of the USA is severely restricted.** 051425



TOUR #1: APRIL 06 – 25, 2026 • JACKIE WEHRFRITZ

CATEGORY	FARE
Standard Plus – Sea or Earth Deck, 118 sq. ft.	\$11,658 \$11,408
Junior Suite – Earth Deck, 159 sq. ft.	\$11,768 \$11,518
Final Payment Due	11/25/25
Land & Cruise Deposit (non-refundable): \$250 per person • Air Deposit: \$500 per person	

TOUR #2: APRIL 20 – MAY 09, 2026 • LAUREN CHU

CATEGORY	FARE
Standard Plus – Sea or Earth Deck, 118 sq. ft.	\$11,658 \$11,408
Junior Suite – Earth Deck, 159 sq. ft.	\$11,668 \$11,418
Final Payment Due	12/11/25
Land & Cruise Deposit (non-refundable): \$250 per person • Air Deposit: \$500 per person	

TOUR #3: AUGUST 10 – 29, 2026 • LISA MCKEE

CATEGORY	FARE
Standard Plus – Sea or Earth Deck, 118 sq. ft.	\$11,588 \$11,338
Junior Suite – Earth Deck, 159 sq. ft.	\$11,668 \$11,418
Final Payment Due	04/02/26
Land & Cruise Deposit (non-refundable): \$250 per person • Air Deposit: \$500 per person	

TOUR #4: SEPTEMBER 07 – 26, 2026 • ANDY LAU

CATEGORY	FARE
Standard Plus – Sea or Earth Deck, 118 sq. ft.	\$11,558 \$11,308
Junior Suite – Earth Deck, 159 sq. ft.	\$11,768 \$11,518
Final Payment Due	04/30/26
Land & Cruise Deposit (non-refundable): \$250 per person • Air Deposit: \$500 per person	

TOUR #5: NOVEMBER 16 – DECEMBER 05, 2026 • WALLY MAU

CATEGORY	FARE
Standard Plus – Sea or Earth Deck, 118 sq. ft.	\$11,558 \$11,308
Junior Suite – Earth Deck, 159 sq. ft.	\$11,698 \$11,448
Balcony Suite – Moon or Sky Deck, 250 sq. ft.	\$12,258 \$12,008
Final Payment Due	07/09/26
Land & Cruise Deposit (non-refundable): \$250 per person • Air Deposit: \$500 per person	



Locally Owned & Operated Since 1985 — Mahalo Hawai'i!
 615 Piikoi Street, Suite 102 • Honolulu, Hawai'i 96814
593-0700 or Toll-Free 1-800-551-1226
www.nonstop.travel

