



**Japan.**  
Endless  
Discovery.



# 2026 SUMMER ULTIMATE TOKAIDO ROAD With Miyajima & Hiroshima

Enjoy your choice of Japan Airlines' "Economy," "Premium Economy," or the affordable luxury of "Business" class service. Premium Economy class customers will begin their journey with a relaxing visit to JAL's "Sakura Lounge" and the "Sakura Lounge - Hale" for Business class.

*Travel to Tokyo and return from Itami (Osaka)!*

*Enjoy a luxury onsen hot spring experience with gourmet Kaiseki Dinner in Miyajima!*

**9 Nights / 11 Days • 20 Meals (9 Breakfasts, 7 Lunches, 4 Dinners)**  
**Escorted from Honolulu • Includes an English-Speaking Local Guide**  
**Tour #2: June 21 – July 01, 2026 • Tour Manager: Wally Mau**

**OVERVIEW:** The Tokaido ("East Sea Road") was the most important of the Five Routes of the Edo period — connecting Edo (modern-day Tokyo) to Kyoto. Unlike the inland and less heavily traveled Nakasendo, the Tokaido traveled along the sea coast of eastern Honshu, hence the route's name.

**VISIT:** Tokyo, Oshino, Hakone, Hiroshima, Miyajima, Okayama, Kurashiki, Himeji, Kyoto & Nara

**TOUR HIGHLIGHTS:** Meiji Shrine, Harajuku Shopping District, Asakusa Sensoji Temple, Nakamise Shopping, Ameyoko Shopping, Oshino Hakkai, Lake Ashi Cruise, Shinkansen Bullet Train Ride, Ferry Ride to Miyajima Island, Itsukushima Shrine, Peace Memorial Park, Hiroshima Peace Memorial Museum, Atomic Bomb Dome, Children's Peace Monument, AEON MALL Okayama, Kurashiki Bikan Area, Himeji Castle, Koko-en Garden, Nijo Castle, Kinkakuji Temple (Golden Pavilion), Todaiji Temple & Nara Deer Park

**HANDS-ON EXPERIENCES:** Sushi Making Class, Japanese Tea Ceremony & Yuzen Dyeing

**UNESCO WORLD HERITAGE SITES:** Itsukushima Shrine, Atomic Bomb Dome, Himeji Castle, Nijo Castle, Kinkakuji Temple (Golden Pavilion) & Todaiji Temple

## COMPLETE PACKAGES!

Includes Roundtrip Airfare From Honolulu,  
9 Nights Hotel, 20 Meals, Tips for Local  
Tour Guides and Motorcoach Drivers,  
All Taxes & Fees

## JAPAN AIRLINES: CHOICE OF CABINS

*Treat yourself to a better vacation!*

**JAL ECONOMY CLASS**  
**\$5,788\***

**JAL PREMIUM ECONOMY CLASS**  
**\$6,788\***

**HURRY! Only 6 Seats Available at this Price!!**

\* Premium Economy seating is for flights between Honolulu and Japan only.  
Domestic Japan flights do not offer Premium Economy seating.

**JAL BUSINESS CLASS**  
**\$8,888\***

**HURRY! Only 6 Seats Available at this Price!!**

**EARLY BOOKING  
DISCOUNT PER PERSON†**  
**Book by 02/27/26 & SAVE \$50**

**Non-Stop Travel  
Exclusive!**

**DON'T MISS A THING!!**  
**WHISPER — Wireless Tour Guide System!**  
English narration directly to your ear!

\* Fares are per person, USD based on double occupancy and include all airline taxes and fees. Airline fuel supplements, taxes and fees are subject to change and tour member is responsible for any increases. Some airline-imposed personal charges, including but not limited to baggage, priority boarding and special seating, may apply. For details visit [www.tripadvisor.com/AirlineFees](http://www.tripadvisor.com/AirlineFees). After initial deposit, a \$75 per person Non-Stop Travel (NST) Cancellation Fee will apply. Group departures may be cancelled, if there are less than 24 tour members. Final payment to NST for "non-cruise/line" Air and Land Package must be made by money order or personal check. NST does not guarantee that all tour members will fly together with Tour Manager. Tour Manager assignments, number of meals offered on tour, tour price, discount, and the "final" cruise or tour itinerary are subject to change with/without notice. NST reserves the right to correct errors or omissions including but not limited to, fares, fees, and surcharges at any time. Deposit: \$500 per person. Final Payment Due: Tour #2: 02/11/26. NST at its discretion, may use group and individual photos on its website, print, television, and various social media. † Early booking discount is per person. Purchase of NST's complete Air and Land Package is required. ‡ Earn rewards every time you refer a friend. For each "new-to-NST" customer you refer, both you and your referral can receive a \$25 discount off your next NST escorted group. **Special Assistance:** You must notify NST, at time of reservation, of any disability requiring special attention. NST reserves the right to cancel your booking or terminate your vacation if your special needs or disabilities are not suitable for the vacation or if you are not traveling with a companion who will provide all the assistance you require. **Wheelchair and electric scooter access outside of the USA is severely restricted.**

J16511 012226

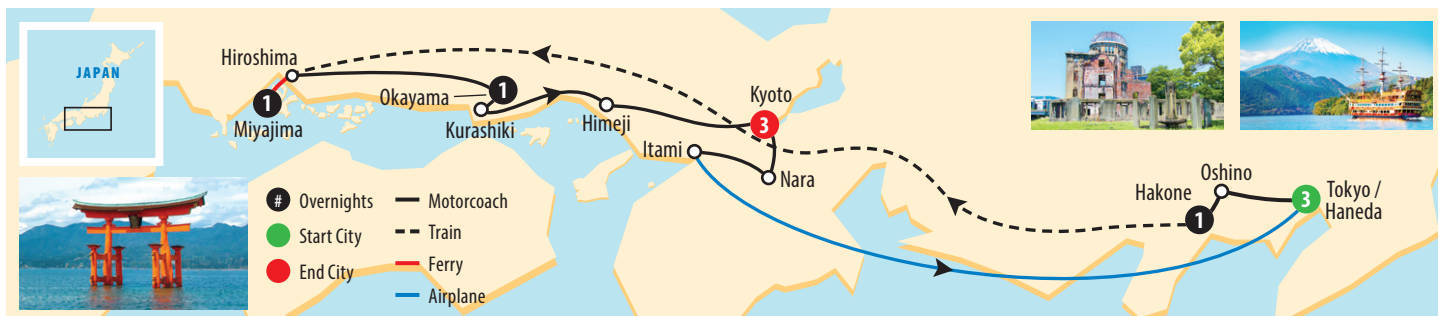


**Locally Owned & Operated  
Since 1985 — Mahalo Hawaii!**

**615 Piikoi Street, Suite 102  
Honolulu, Hawaii 96814**

**593-0700  
or Toll-Free  
1-800-551-1226**

**[www.nonstop.travel](http://www.nonstop.travel)**



**Day 1: Sun, Jun 21** — HONOLULU. Depart Honolulu via Japan Airlines flt #73 at 12:45 pm.

**Day 2: Mon, Jun 22** — HANEDA — TOKYO. Arrive at the Haneda International Airport at 3:55 pm. After entry formalities, transfer by coach to your hotel. **KEIO PLAZA HOTEL TOKYO** (3 Nights)

**Day 3: Tue, Jun 23** — TOKYO. After a sumptuous buffet breakfast, embark on a full day of discovery! First visit **Meiji Shrine**, a Shinto shrine dedicated to the deified spirits of the Emperor Meiji and his wife, Empress Shoken. Then visit the visually stimulating **Harajuku Shopping District**. Today's highlight will be a hands-on **sushi making class**, which will yield your delicious lunch. After lunch, head to **Asakusa**, the center of Tokyo's shitamachi (literally "low city") districts, where an atmosphere of the Tokyo of past decades survives. Asakusa's main attraction is **Sensoji**, a very popular Buddhist temple built in the 7<sup>th</sup> century. The temple is approached via the **Nakamise**, a shopping street that has been providing temple visitors with a variety of traditional local snacks and tourist souvenirs for centuries. Next visit **Ameyoko**, a busy market street along the Yamanote Line Tracks between Okachimachi and Ueno Stations. The name "Ameyoko" is a short form for "Ameya Yokocho" ("candy store alley"), as candies were traditionally sold there. Alternatively, "Ame" also stands for "America," because a lot of American products used to be available there when the streets was the site of a black market in the years following WWII. Today, various products such as clothes, bags, cosmetics, fresh fish, dried food, and spices are sold along Ameyoko. Finally, transfer back to the hotel to enjoy a buffet dinner. (B, L, D)

**Day 4: Wed, Jun 24** — TOKYO. Day at leisure. Enjoy shopping and dining in the bustling Shinjuku area. A perfect day to relax and/or visit with family and friends in Tokyo. Your Local Guide will be available to assist as needed. (B)

**Day 5: Thur, Jun 25** — TOKYO — OSHINO — HAKONE. After breakfast, depart Tokyo for Hakone. Enroute, visit **Oshino Hakkai**, a set of eight ponds located in the Fuji Five Lake Region. The eight ponds are fed by melting snow from the nearby slopes of Mt. Fuji. The melted snow filtered down through porous layers of lava for 80 years, creates a very clear spring water that is revered by the locals. Next to one pond, visitors can drink the cool water straight from the source. Continue the journey to Hakone, where much of the area is considered an active volcanic zone since its creation from eruption of Mt. Hakone some 3,000 years ago. After lunch, enjoy a **boat ride on the beautiful Lake Ashi**. Then transfer to the hotel for a buffet dinner. Be sure to have a relaxing soak in the **onsen hot springs** — which are divided for men and women — whether indoors or outdoors. The high-quality service and facilities are sure to become some of your fondest memories of your visit to Japan. **HAKONE HOTEL KOWAKIEN** (1 Night) (B, L, D)

\*Baggage will be sent from Hakone to Okayama, skipping Miyajima. Prepare an overnight bag for one night.

**Day 6: Fri, Jun 26** — HAKONE — HIROSHIMA — MIYAJIMA. Transfer to Odawara Train Station, where we will board the **Shinkansen Bullet Train** to Hiroshima. Transfer to Miyajima—guchi by motorcoach. Take a short **ferry ride** to the island of Miyajima, considered sacred by many. Walk to the hotel. This evening, soak in the relaxing atmosphere of the **onsen hot spring baths**. For dinner, enjoy a traditional, multi-course **Kaiseki Dinner** featuring Hiroshima's local and seasonal ingredients including fresh seafood from the Seto Inland Sea. **IWASO INN** (1 Night) (B, L, D)

**Day 7: Sat, Jun 27** — MIYAJIMA — HIROSHIMA — OKAYAMA. After breakfast, begin the morning exploring **Itsukushima Shrine**. At high tide, the vermillion torii gate looks like it's floating in the middle of the sea. The shrine complex has been selected as one of Japan's Three Most Scenic Places (Nihon Sankei). Board the **ferry back to Hiroshima**. After lunch, visit the **Peace Memorial Park, Hiroshima Peace Memorial Museum, Atomic Bomb Dome**, and **Children's Peace Monument**. Finally, depart Hiroshima for Okayama. Upon arrival in Okayama, enjoy an evening of shopping and dining (on your own) at a **AEON MALL Okayama**. **HOTEL GRANVIA OKAYAMA** (1 Night) (B, L)

**Day 8: Sun, Jun 28** — OKAYAMA — KURASHIKI — HIMEJI — KYOTO. Start the day with a visit to **Kurashiki** and its beautiful **Bikan area**. In merchant days, this scenic town thrived as a port for rice shipments. Several old rice granaries and examples of historic architecture still remain, in addition to the picturesque stone lined canal. After lunch, we drive to Himeji to visit **Himeji Castle**. It is known as "White Egret Castle" and "White Heron Castle" because of its brilliant white exterior that resembles a bird taking flight. Himeji Castle is the largest and most visited castle in Japan. A short walk from the castle's main gate (Otemon Gate) is **Koko-en Garden**. Opened in 1992 on the former site of the feudal lord's residence, this Japanese-style garden consists of nine separate walled gardens designed in various styles of the Edo Period (1603–1868) and features a pond with a waterfall, a tea garden, a pine tree garden, a bamboo garden, and a flower garden. Transfer to the hotel in Kyoto for an evening of leisure. The Local Guide will have suggestions for dinner. **MIYAKO HOTEL KYOTO HACHIJO** (3 Nights) (B, L)

**Day 9: Mon, Jun 29** — KYOTO. After a sumptuous buffet breakfast at the hotel, embark on a full day of sightseeing beginning with a traditional **Japanese tea ceremony**. Next, visit the **Nijo Castle**. After the Tokugawa Shogunate fell in 1867, Nijo Castle was used as an imperial palace for a while before being donated to the city and opened up to the public as a historic site. Its palace buildings are arguably the best surviving examples of castle palace architecture of Japan's feudal era. Enjoy lunch at a local restaurant before taking part in today's hands-on experience: **Yuzen dyeing**. Since the patterns are dyed by using paper stencils, you can make an authentic piece, even if this is your first time — a great reminder of this trip! Lastly, visit the iconic **Kinkakuji Temple (Golden Pavilion)**, a Zen Temple whose top two floors are completely covered in gold leaf. Return to the hotel for a buffet dinner. (B, L, D)

**Day 10: Tue, Jun 30** — KYOTO. Enjoy a full day at leisure. The perfect day to fulfill your shopping list. Your Local Guide will be available to assist as needed. (B)

**Day 11: Wed, Jul 01** — KYOTO — NARA — ITAMI — HANEDA — HONOLULU. After a sumptuous breakfast, visit **Todaiji Temple**, the largest wooden building in Japan. It houses the largest bronze statue of Buddha, which measures 16.3 meters high. Then spend some time in the surrounding **Nara Deer Park** that is inhabited by **over 1,000 deer**. After lunch, depart Nara for Osaka Itami Airport for the return flight home. Depart Itami via Japan Airlines flt #128 at 4:50 pm and arrive at the Haneda Domestic Airport at 6:15 pm. Depart the Haneda International Airport via Japan Airlines flt #74 at 9:05 pm and arrive in Honolulu at 9:45 am the same day. Aloha and welcome home! (B, L)

**UNESCO World Heritage Sites:** Itsukushima Shrine (1996), Atomic Bomb Dome (1996), Himeji Castle (1993), Nijo Castle (1994), Kinkakuji Temple (1994), Todaiji Temple (1998).