



# 2027 CIRCLE JAPAN CRUISE TOUR #1

## Plus Tokyo, Kawagoe, Hakone & Yokohama

### Diamond Princess

**10-Night Premium Cruise Plus 5 Nights Pre-Cruise  
Hotel Stay with Included Sightseeing and Meals**

**15 Nights / 17 Days • Escorted from Honolulu • Diamond Princess  
Sail Roundtrip from Tokyo (Yokohama), Japan  
May 12 – 28, 2027 • Tour Manager: Melanie Lum**

Enjoy your choice of Japan Airlines' "Economy," "Premium Economy," or the affordable luxury of "Business" class service. Premium Economy class customers will begin their journey with a relaxing visit to JAL's "Sakura Lounge" and the refined "Sakura Lounge – Hale" for Business class customers.

### PRE & POST-CRUISE HIGHLIGHTS:

Koedo Kawagoe (Little Edo), Kinbue Shoyu Park, teamLab Borderless: MORI Building DIGITAL ART MUSEUM, Tokyo Skytree, Furin (Japanese Wind Chime) Painting OR Edo Kiriko Edging Experience, Asakusa Sensoji Temple, Nakamise Shopping, Yakatabune Dinner Cruise with an All-You-Can-Drink Menu, Edo-Tokyo Museum, Deep Fried Kamaboko Experience, Odawara Castle, Boat Ride on Lake Ashi, Okada Museum of Art, Shin-Yokohama Ramen Museum, Ramen Making Experience, Toyosu Senkyaku Banrai Shopping, Ameyoko Shopping & Ario Kitasuna Shopping

### CRUISE HIGHLIGHTS:

Hakodate (Japan), Niigata (Japan), Busan (South Korea), Nagasaki (Japan), Kagoshima (Japan), Kochi (Japan) & Shimizu (for Mt. Fuji, Japan)

### YOUR COMPLETE PACKAGE INCLUDES:

Roundtrip Airfare from Honolulu, 5 Nights Pre-Cruise Hotel Stay, Meals and Sightseeing as Indicated on the Itinerary, 10-Night Premium Cruise Ship Accommodations, Unlimited Shipboard Gourmet Dining, Nightly Shipboard Entertainment, Full Shipboard Casino, 24 Hour Room Service & All Transfers, Taxes, and Fees

### COMPLETE PACKAGES!

Includes Roundtrip Airfare from Honolulu, 10-Night Cruise, 5 Nights Hotel, Meals and Sightseeing as Indicated on the Itinerary & All Transfers, Taxes, and Fees

### JAPAN AIRLINES: CHOICE OF CABINS

*Treat yourself to a better vacation!*

JAL ECONOMY CLASS  
FROM **\$7,349\***

JAL PREMIUM ECONOMY CLASS  
FROM **\$8,549\***

**HURRY! Only 6 Seats Available at this Price!!**

JAL BUSINESS CLASS  
FROM **\$11,649\***

**HURRY! Only 6 Seats Available at this Price!!**

### EARLY BOOKING DISCOUNT PER PERSON†

Book by 07/31/26 & **SAVE \$100**  
Book by 10/30/26 & **SAVE \$50**

### Princess Plus Bonuses!°



**BOOK TODAY & RECEIVE  
COMPLIMENTARY AMENITIES  
FOR PASSENGERS 1 & 2**

- **Princess Plus Beverage Package** with tips
- **Wi-Fi is Unlimited**, one device per guest
- **Gratuities are Pre-Paid** by Princess Cruises
- **4 Casual Dining Meals**



NORTHERN CULTURE MUSEUM, NIIGATA

**Sightseeing in each port is NOT included. Shore excursions are available for purchase through Princess Cruises.**

---

**Day 1: Wed, May 12** – HONOLULU. Depart Honolulu via Japan Airlines flt #71 at 4:10 pm.

---

**Day 2: Thur, May 13** – HANEDA – TOKYO. Arrive at the Haneda International Airport at 8:10 pm. After entry formalities, transfer by coach to the hotel in Tokyo. A cutlet sandwich will be passed out for dinner upon arrival at the hotel. KEIO PLAZA HOTEL TOKYO (3 Nights) (D)

---

**Day 3: Fri, May 14** – TOKYO – KAWAGOE – TOKYO. After breakfast, depart Tokyo for the historic city of Kawagoe, which is referred to as **Koedo Kawagoe (Little Edo)**. The city is known for preserving the charm of the Edo Period (1603–1867) with its clay-walled buildings. Take a stroll along its main street, Kurazukuri Street, and you'll find it lined with old-fashioned merchant warehouses. Kashiya Yokocho (Candy Alley) is a narrow street that sells traditional sweets and snacks. You'll have ample free time to stroll, shop, and eat (on your own) while here. Next, visit **Kinbue Shoyu Park** for a tour of the facilities and learn how a staple of Japanese cooking is made. Return to Tokyo and explore **teamLab Borderless: MORI Building DIGITAL ART MUSEUM**. "teamLab Borderless is a world of artworks without boundaries, a museum without a map created by art collective teamLab. Artworks move out of rooms, relate to other works, influence each other, and at times intermingle, without boundaries. Through this group of works, one continuous world without boundaries is created. Immerse your body in borderless art. Wander, explore with intention, discover, and create a world with others." Return to the hotel for a buffet dinner. (B, D)

---

**Day 4: Sat, May 15** – TOKYO. This morning, take in the view of the surrounding city from the observation deck of the **Tokyo Skytree**. At just over 2,000ft-tall, it is the tallest tower in Tokyo. Rising 350m above the ground, the Tokyo Skytree Tembo Deck offers a 360° panoramic view of Tokyo. You'll also have time to enjoy lunch (on your own) at the restaurant located in Tokyo Skytree – or at TOKYO Solamachi, the large shopping, dining, and entertainment complex located at the base of the Tokyo Skytree. After lunch, enjoy a fun-filled hands-on activity. You will either **paint your own furin (Japanese wind chime)** OR **learn the art of Edo kiriko edging**, a traditional form of cut glass manufacturing characterized by beautiful, intricate patterning and bold contrast between colored and non-colored elements. Whichever activity you participate in, you'll take home a wonderful souvenir of this trip! **Asakusa's** main attraction is **Sensoji**, a very popular Buddhist temple built in the 7<sup>th</sup> century. The temple is approached via the **Nakamise**, a shopping street that has been providing temple visitors with a variety of traditional local snacks and tourist souvenirs for centuries. You're in for a treat tonight! Take a **dinner cruise on a yakatabune**, a traditional Japanese houseboat, as you glide past the twinkling lights of the city. Dinner will include an **all-you-can-drink menu** as well. After dinner, return to the hotel. (B, D)

---

**Day 5: Sun, May 16** – TOKYO – HAKONE. Start your day with a tour of the **Edo-Tokyo Museum**, which vividly illustrates the past of Tokyo (known as Edo until 1869) through its exhibits. Visitors



GLOVER GARDEN, NAGASAKI

are able to experience and learn about various aspects of what life was like during the Edo period. After lunch, **learn how to make deep fried kamaboko**. Kamaboko, also known as Satsuma-age, is a savory Japanese fishcake made by deep-frying surimi paste (a minced fish paste primarily made from white fish, like Alaska pollock) until golden brown and crispy. It's characterized by its bouncy texture, and can include vegetables like burdock root or ginger. Fresh kamaboko is so tasty! Next, explore the nearby **Odawara Castle**. Originally built in the mid-15<sup>th</sup> century, the Hojo Clan – one of the most powerful clans during the Sengoku (Warring States) Era – used the castle as its base to control the region around modern-day Tokyo. Today, it's the closest castle keep to Tokyo. Continue to Hakone, where much of the area is considered an active volcanic zone since its creation from eruption of Mt. Hakone some 3,000 years ago. Enjoy a buffet dinner at the hotel. Tonight, try out the **onsen hot springs**, which are divided for men and women. The high-quality service and facilities are sure to become some of your fondest memories of your visit to Japan. Don't miss out! HAKONE KOWAKIEN HOTEL (2 Nights) (B, L, D)

---

**Day 6: Mon, May 17** – HAKONE. After breakfast, depart the hotel for a day of sightseeing and activities in Hakone. Begin the day with a **boat ride** on the beautiful **Lake Ashi**. After lunch, spend time exploring the **Okada Museum of Art**. The five-floored museum is one of the largest privately owned museums in the region. Opened in 2013, the museum specializes in Asian art with a collection that includes art pieces that date from antiquity to the modern era. The museum grounds also include a Japanese garden, teahouse, and café with an onsen hot spring foot bath for café patrons to soak their feet in. To protect the art pieces, the museum does not allow picture taking and requires all visitors to place all belongings (cell phones, cameras, bags, etc.) in the lockers at the front entrance. After enjoying your time at the museum, walk back to the hotel, where you will have free time until it is time for dinner at the hotel. One option for your free time is the nearby **Hakone Kowakien Yunessun**, an all-weather onsen amusement park. Yunessun is approximately a short three-minute walk away from the hotel. Tour members are allowed unlimited visits at no additional cost! Get your wristband, which will give you entry to Yunessun, at Hakone Kowakien Hotel's front desk. The wristband will allow you to enter without waiting in line, even when Yunessun is crowded! Upon entrance, you can receive one complimentary face towel, body towel, and lounge wear (additional towels and lounge wear are at an additional cost). Enjoy food and beverages at Yunessun at your own expense. Just don't forget to return to the hotel for dinner tonight!! (B, L, D)

---

**Day 7: Tue, May 18** – HAKONE – YOKOHAMA – EMBARK DIAMOND PRINCESS. After a delicious breakfast at the hotel, depart the hotel for Yokohama. Begin the day at **Shin-Yokohama Ramen Museum**, the world's first ramen-themed amusement park. Founded in 1994, it was created to be the one-stop place to enjoy the flavors of this national dish from renowned shops across Japan without having to step on a plane. Learn about the history and culture of ramen. Then, take part in a **ramen making experience**, where you will make noodles using the traditional Chinese method of "green bamboo beating" and enjoy learning how flour is transformed into ramen. You'll get to enjoy your creation for lunch, before transferring to the pier for embarkation on the Diamond Princess. (B, L, D)

---

**Day 8: Wed, May 19** – AT SEA. (B, L, D)



CHIRAN SAMURAI RESIDENCES AND GARDENS, KAGOSHIMA

**Day 9: Thur, May 20** – HAKODATE, JAPAN. 7:00 am – 4:00 pm. (B, L, D)

**Day 10: Fri, May 21** – NIIGATA, JAPAN. 9:00 am – 6:00 pm. (B, L, D)

**Day 11: Sat, May 22** – AT SEA. (B, L, D)

**Day 12: Sun, May 23** – BUSAN, SOUTH KOREA. 7:00 am – 4:00 pm. (B, L, D)

**Day 13: Mon, May 24** – NAGASAKI, JAPAN. 7:00 am – 4:00 pm. (B, L, D)

**Day 14: Tue, May 25** – KAGOSHIMA, JAPAN. 7:00 am – 4:00 pm. (B, L, D)

**Day 15: Wed, May 26** – KOCHI, JAPAN. 9:00 am – 5:00 pm. (B, L, D)

**Day 16: Thur, May 27** – SHIMIZU (FOR MT. FUJI), JAPAN. 1:00 pm – 7:00 pm. (B, L, D)

**Day 17: Fri, May 28** – YOKOHAMA – DISEMBARK DIAMOND PRINCESS – TOKYO – HANEDA – HONOLULU. After disembarkation, explore **Toyosu Senkyaku Banrai**, a shopping complex that recreates an Edo period neighborhood. Toyosu Senkyaku Banrai offers fresh food from the neighboring Toyosu Market and serves to showcase the best foods in Tokyo. Enjoy time for shopping, lunch (on your own), and exploring the offerings at the numerous stalls. If you get tired, head up to the 8<sup>th</sup> floor and relax at the foot bath garden which is free of charge to all visitors. Next, visit **Ameyoko**, a busy market street along the Yamanote Line tracks between Okachimachi and Ueno Stations. The name “Ameyoko” is a short form for “Ameya Yokocho” (Candy Store Alley), as candies were traditionally sold there. Alternatively, “Ame” also stands for “America,” because a lot of American products used to be available there when the street was the site of a black market in the years following WWII. Today, various products such as clothes, bags, cosmetics, fresh fish, dried food and spices are sold along Ameyoko. Finally, visit **Ario Kitasuna**, a shopping center with over 100 specialty shops. This includes CAN★DO, a 100 yen store, and Halos Garden – an amusement center for the whole family featuring the latest gaming machines, hands-on sweet making, a large ball pit, and more! You’ll have time to shop before departing for the airport. Transfer to the airport for the flight home. Depart Haneda International Airport via Japan Airlines flt #72 at 9:55 pm and arrive Honolulu at 9:55 am the same day. Aloha and welcome home! (B)

*Note: Tour itinerary is subject to change at any time with/without notice.*



OROKE GORGE, KOCHI

## HAKONE KOWAKIEN YUNESSUN — AN ALL-WEATHER ONSEN AMUSEMENT PARK

### Yunessun Area (Swimwear Area)

- Open until 6:00 pm on weekdays and 7:00 pm on weekends and holidays. Hours vary depending on the season. Last entry is one hour before closing time.
- Tattoos are allowed as long as they are covered by a rash guard, band-aid, or tattoo cover-up.
- Experience the thrill of our big, exciting water slide and splash in the waterfall while staying warm and comfortable all year round. Plus, enjoy various themed pools in the large domed area that provides all-weather enjoyment. Or simply relax in the 40m outdoor onsen hot spring surrounded by nature and soak up the beautiful scenery.



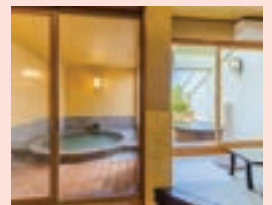
### Mori no Yu Area (No Clothing Area)

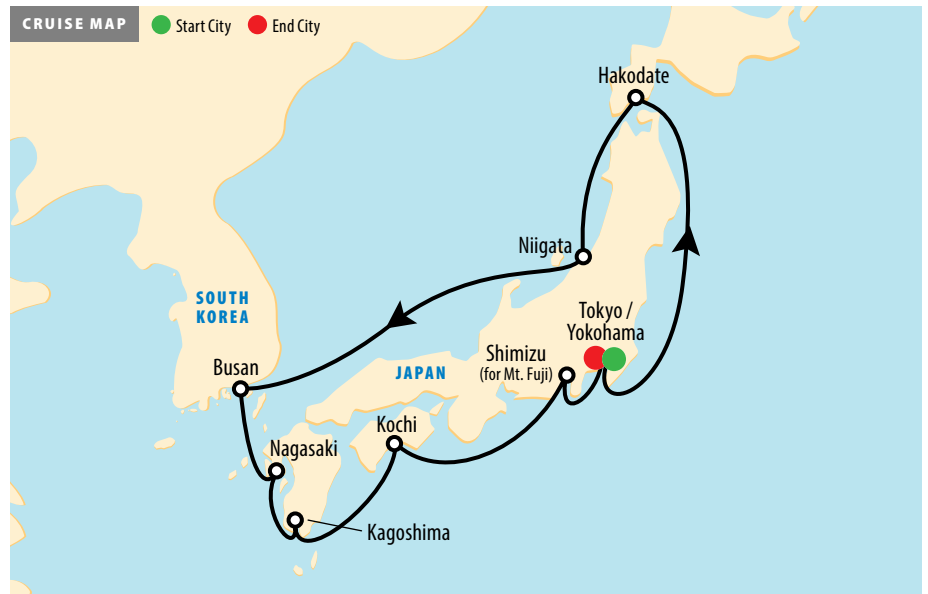
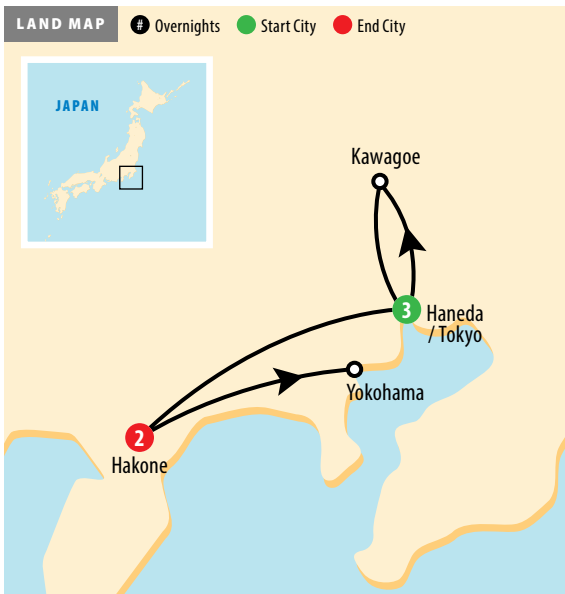
- Open until 8:00 pm daily. Hours vary depending on the season. Last entry is 30 minutes before closing time.
- Tattoos are not allowed.
- Soak up the traditional atmosphere of the onsen hot spring baths, including open-air baths with picturesque views of nature or traditional Japanese ceramics. Lounges and a massage salon are also available. Both male and female areas include open-air baths, indoor bath, jacuzzi, lie down baths, and traditional Shigaraki stoneware pottery baths.
  - Male area only: Waterfall Shoulder Massage and Dry Sauna that invokes heavy sweating.
  - Female area only: Cypress Bath, Collagen Bath, and Mist Sauna that moisturizes skin and hair.



### Reserved Private Room with Baths

- Open until 8:00 pm daily. Hours vary depending on the season. Reservations are required. Additional fees apply.
- Tattoos are allowed.
- Relish quality time along with your family and/or friends.





CATEGORY	ECONOMY	PREMIUM	BUSINESS
ID – Inside Aft	\$7,349	\$8,549	\$11,649
IC – Inside Mid For or Mid Aft	\$7,389	\$8,589	\$11,689
IB – Inside Mid For, Mid, or Mid Aft	\$7,429	\$8,629	\$11,729
OW – Obstructed Ocean View Mid For or Mid Aft	\$7,629	\$8,829	\$11,929
OC – Ocean View Mid For	\$8,139	\$9,339	\$12,439
BD – Balcony Aft	\$8,439	\$9,639	\$12,739
BC – Balcony Mid For or Mid Aft	\$8,459	\$9,659	\$12,759
BB – Balcony Mid For, Mid, or Mid Aft	\$8,509	\$9,709	\$12,809
MD – Mini-Suite Aft	\$9,339	\$10,539	\$13,639
MB – Mini-Suite Mid For or Mid Aft	\$9,439	\$10,639	\$13,739
Final Payment Due		01/04/27	
Cruise Deposit: 20% of cruise fare • Air & Land Deposit: \$500 per person			



\* Fares are per person, USD based on double occupancy and include all airline and cruiseline taxes and fees. Cruiseline and airline fuel supplements, Taxes, and Fees are subject to change and tour member is responsible for any increases. Some airline-imposed personal charges, including but not limited to baggage, priority boarding and special seating, may apply. For details visit [www.TripAdvisor.com/AirlineFees](http://www.TripAdvisor.com/AirlineFees). After initial deposit, a \$75 per person Non-Stop Travel (NST) cancellation fee will apply. Group departures may be cancelled, if there are less than 24 tour members. Final payment to NST for "non-cruiseline" Air and Land Package must be made by money order or personal check. NST does not guarantee that all tour members will fly together with Tour Manager. Tour Manager assignments, number of meals offered on tour, tour price, discount, and the "final" cruise or tour itinerary are subject to change with/without notice. **NST reserves the right to correct errors or omissions including but not limited to, fares, fees, and surcharges at any time.** NST at its discretion, may use group and individual photos on its website, print, television, and various social media. Tour highlights and activities are subject to change. Whisper Wireless Tour Guide System not included on this tour. † Early booking discount is per person. Purchase of NST's complete Air and Land Package is required. ‡ Subject to change with/without notice. Princess Plus Bonuses amenities apply to passengers one and two in the stateroom only. Princess Plus Beverage Package is for all guests 21 years old or older and includes 15 drinks per day (up to \$15 each). Those under 21 will receive the Princess Plus Zero-Alcohol Package. Exclusions and limitations apply. † Gratuity is not included for optional shore excursions, shipboard personnel, and your Tour Manager. †† Earn rewards every time you refer a friend. For each "new-to-NST" customer you refer, both you and your referral can receive a \$25 discount off your next NST escorted group. **Special Assistance:** You must notify NST, at time of reservation, of any disability requiring special attention. NST reserves the right to cancel your booking or terminate your vacation if your special needs or disabilities are not suitable for the vacation or if you are not traveling with a companion who will provide all the assistance you require. **Wheelchair and electric scooter access outside of the USA is severely restricted.**



**Locally Owned & Operated Since 1985 — Mahalo Hawaii!**  
 615 Piikoi Street, Suite 102 • Honolulu, Hawaii 96814  
**593-0700** or Toll-Free 1-800-551-1226  
[www.nonstop.travel](http://www.nonstop.travel)