



AVALON
WATERWAYS®

GLOBUS
family of brands

2027 EUROPEAN SAMPLER PLUS BONJOUR BORDEAUX

With 2 Nights in Paris

17 Nights / 20 Days • Escorted from Honolulu

Travel to Amsterdam, Holland & Return from Bordeaux, France

Avalon Artistry II • Featuring 200 sq. ft. Panorama Suites

May 20 – June 08, 2027

COUNTRIES: Holland, Germany, Switzerland & France

RIVERS: Rhine River, Garonne River & Dordogne River

LAND OVERVIEW: Like a lazy Susan generously plated with cured herring, breaded schnitzel, rich fondue, and beef bourguignon, this aptly named European Sampler invites you to sink your teeth into four delectable countries and cultures. Designed to introduce you to the best of Holland, Germany, Switzerland, and France, this nine-day tour of Europe is an awakening for more than just your taste buds. All of your senses will perk up as you leisurely cruise along Amsterdam's bridge-covered canals, dreamily float down the romantic Rhine, and journey through Germany's picturesque Black Forest, Burgundy's rolling green vineyards, and the white-capped peaks of the Swiss Alps. Along the way, you can expect a heaped helping of cities and villages, castles and palaces, and hand-carved cuckoo clocks to enhance your time in the most remarkable regions of Europe.

PLUS, your tour includes your choice of excursions in Beaune so you can plan your day your way.

CRUISE OVERVIEW: Bid bonjour to the bountiful beauty of Bordeaux with a captivating cruise on the Garonne and Dordogne Rivers to delight in one of France's most exquisite regions. This river cruise through France begins in style with two overnights in Paris — one of the world's most romantic and vibrant cities! Explore the "City of Light" with a guided city tour to see its famous landmarks.

Embark from Bordeaux itself, the capital of the splendid Nouvelle-Aquitaine region — famed for its legendary vineyards and wines. Be carried away by Avalon's signature included Classic, Active, or Discovery experiences of your choice — from the regal histories of castles and Châteaux to the romantic cellars where wine bouquets and bon-vivant cuisine tempt the palate. While the landscapes and lush pastoral treasures are plentiful along the shores of the Garonne and Dordogne, Avalon elevates each immersive experience for a deeper discovery of the cultural and architectural treasures that recall the rich traditions of Southwest France. From unparalleled panoramic drives to forested two-wheel excursions by bike to the delicacies of seaside Arcachon — the world is your oyster on this adventure in la belle vie of Bordeaux!

**A NON-STOP TRAVEL
EXCLUSIVE OFFER!**

**SAVE \$750
PER PERSON**

MUST RESERVE BY MARCH 31, 2026

**COMPLETE
PACKAGES!**

FROM ~~\$12,819*~~
\$12,069*

INCLUDES ROUNDTRIP AIRFARE
FROM HONOLULU, 10 NIGHTS HOTEL
ACCOMMODATIONS, 7 NIGHTS RIVER
CRUISE, MEALS AND SIGHTSEEING
AS INDICATED ON ITINERARY,
TRANSFERS, TAXES & FEES

EXCLUSIVE BONUS!

Pre-Paid Cruise Gratuities

**NON-STOP
TRAVEL**

Locally Owned & Operated
Since 1985 — Mahalo Hawaii!

615 Piikoi Street, Suite 102
Honolulu, Hawaii 96814

593-0700
or Toll-Free
1-800-551-1226

www.nonstop.travel

011426



HEIDELBERG CASTLE, GERMANY

Select sightseeing is included in tour. Additional optional tours are available for purchase through Avalon Waterways. Itinerary shown is based on Globus and Avalon's 2027 tour. Tour itinerary and inclusions are subject to change at any time with or without notice by Avalon. In the event of technical or water level issues, it may be necessary to operate the itinerary by motorcoach or alter the program, including hotel overnight when necessary. Guided tours, optional excursions, activities, sailing, and docking schedules may be contingent on weather conditions or other issues outside of Avalon's control and therefore be subject to change at any time. *For operational reasons, changes to the Paris land program cannot be excluded.

Day 1: Thur, May 20 — HONOLULU. Depart Honolulu.

Day 2: Fri, May 21 — IN TRANSIT.

Day 3: Sat, May 22 — AMSTERDAM, HOLLAND. Welcome to Holland! After completing arrival formalities, transfer by coach to the hotel in Amsterdam. The hotel room will be available in the afternoon. The rest of the day is free for you to explore Amsterdam on your own. At 6:00 pm, meet your Tour Director and travel companions for a welcome dinner at your hotel. WESTCORD ART HOTEL AMSTERDAM or Similar (2 Nights) (D)

Day 4: Sun, May 23 — AMSTERDAM. This morning, meet your Local Guide for a fascinating introduction to Amsterdam. At the pier board a glass-topped boat to admire Amsterdam from a different perspective as you cruise along the elegant, UNESCO-listed grachten (canals). See the most captivating views of "Golden Age" homes, landmark buildings, and charming bridges. Later, visit a Diamond Center to learn why Amsterdam is often called the "Diamond Capital of the World." Free time this afternoon and evening to explore more. (B)

Day 5: Mon, May 24 — AMSTERDAM — HEIDELBERG, GERMANY. Drive across the border into Germany. A real treat awaits with a scenic cruise on the Rhine River, one of Europe's most important rivers, flowing through six countries. Admire castles, vineyards, and charming villages as you sail down the river. On disembarkation, continue your journey to Heidelberg. Take photos of the red-walled castle ruins and enjoy dinner with a beer at the Kulturbrauerei Heidelberg restaurant. NH COLLECTION HEIDELBERG or Similar (1 Night) (B, D)

Day 6: Tue, May 25 — HEIDELBERG — BLACK FOREST — RHINE FALLS, SWITZERLAND — LUCERNE. This morning, head to the Black Forest to enjoy some local traditions. Watch a traditional woodcarving demonstration followed by a delicious helping of kaffee und schwarzwaldkuchen (coffee and Black Forest cake). Later, drive over the border into Switzerland and stop to admire the breathtaking Rhine Falls. Continue to Lucerne and join a walking tour to see the city highlights including the Bourbaki Panorama, the Lion Monument, and the 14th century Chapel Bridge that crosses the River Reuss from the Altstadt (Old Town). GRAND HOTEL EUROPE or Similar (2 Nights) (B, D)



NOTRE DAME CATHEDRAL, FRANCE

Day 7: Wed, May 26 — LUCERNE. A whole day to do as you please. Explore more on your own and get better acquainted with this alpine gem or join an optional excursion up one of the mighty mountains that surround it. (B)

Day 8: Thur, May 27 — LUCERNE — BEAUNE, FRANCE. Leave Switzerland behind as you enter France. En route to Beaune, enjoy a scenic drive through Burgundy with its vineyards and châteaux. Spend your day your way in Beaune with your choice of included Globus Choice Excursions. ALL ABOARD IN BEAUNE: All aboard the "Petit Train Touristique" for a relaxing orientation ride through the charming medieval town of Beaune. Hear insightful commentary on local landmarks, including the beautifully preserved Hôtel Dieu, the Church of Notre-Dame, the Square des Lions, Pont des Oies, and more aboard the little electric train! OR CELLAR SIPS AND SAVORY BITS: They say there are over 100 kilometers of wine cellars beneath Beaune! As the center of the region's wine trade for over 2,000 years, it's no wonder. Go deeper into Burgundy's wine capital with a guided visit to a local wine cellar, with wine tasting and culinary bites. Santé! Free time this evening. HENRY II or Similar (1 Night) (B)

Day 9: Fri, May 28 — BEAUNE — VERSAILLES — PARIS. Prepare to be amazed by the opulence when you stop at the Palace of Versailles en route to Paris. Explore the elegant Baroque gardens on your own before meeting your Local Guide or a walk through some of the palace's incredible rooms including the State Apartments and the Hall of Mirrors. Arrive in Paris later this afternoon giving you plenty of time to get acquainted with this iconic city. PARIS MARRIOTT RIVE GAUCHE or Similar (2 Nights)(B)

Day 10: Sat, May 29 — PARIS. This morning, your guided sightseeing is composed of an orientation drive and a scenic cruise on the River Seine with incredible views of celebrated landmarks including Notre Dame Cathedral and the Eiffel Tower. Enjoy free time this afternoon to explore more independently or join an optional excursion. Later, enjoy a farewell dinner (for this portion of the tour) at a local restaurant. (B, D)

Day 11: Sun, May 30 — PARIS. Transfer to the next Paris hotel. Rooms will not be available until the afternoon. Enjoy a day of leisure in Paris. HOTEL DU COLLECTIONNEUR ARC DE TRIOMPHE PARIS or Similar (2 Nights) (B)

Day 12: Mon, May 31 — PARIS.

 **CLASSIC EXCURSION:** Join a guided city tour featuring the iconic sites of Paris, which make the "City of Light" the most romantic and remarkable city in the world.

Spend your free time strolling through the Champs-Élysées for café au lait and croissants, see the exhibits at the Louvre, or visit Montmartre's Basilica of the Sacré Cœur. Consider browsing Paris' classic shopping avenues and literary cafés for a true Parisian experience, or have your portrait sketched by a Parisian artist in the square at Place du Tertre. (B)



Day 13: Tue, June 01 — PARIS — EMBARK AVALON ARTISITRY II — BORDEAUX. This morning, travel to Bordeaux to board the Avalon Artistry II and start your **cruise on the Garonne and Dordogne Rivers**. This evening, enjoy a very special scenic sailing in Bordeaux. The ship will be docked in Bordeaux overnight. (B, D)

Day 14: Wed, June 02 — BORDEAUX — PAUILLAC.

CLASSIC EXCURSION: Take a **guided tour of Château de la Brède** — birthplace of Montesquieu — political philosopher and author of *The Spirit of Law*. Visit the **fortress-style castle** still reflected in its impressive moat, OR

DISCOVERY EXCURSION: Join a **guided visit with wine tasting** at a **local wine estate**. Sip the sweet notes and fresh acidity of Sauternes, the beloved golden-yellow wine.

DISCOVERY EXCURSION: Join a delicious **on board Bordeaux wine experience** while sailing to Pauillac with a presentation by a **world-class wine sommelier**.

This evening, enjoy **live entertainment on board** the ship. The ship will be docked overnight in Pauillac. (B, L, D)

Day 15: Thur, June 03 — PAUILLAC — CUSSAC FORT MÉDOC — BLAYE. This morning, enjoy a **leisurely sailing to Cussac Fort Médoc**. Visit the Adventure Center for today's activities with your Adventure Host.

ACTIVE EXCURSION: Enjoy a relaxing **e-bike guided tour** in Bordeaux's finest wine region. You will be amazed by the picturesque countryside while you enjoy a wonderful **ride through the vineyards**, OR

DISCOVERY EXCURSION: Join a **guided tour** to discover the **culture and traditions of the southern Médoc region** at one of Margaux' beautiful château and enjoy a **wine tasting**, OR

CLASSIC EXCURSION: Take a **scenic drive** through the famed **Médoc wine country** and enjoy a **tasting of wonderful wines, featuring Merlot and Cabernet Sauvignon**.

This evening, enjoy a brief sailing to Blaye. The ship will dock overnight in Blaye. (B, L, D)

Day 16: Fri, June 04 — BLAYE — BOURG. Ask your Adventure Host for today's special activities.

ACTIVE EXCURSION: Join a refreshing **power walk** through the **historic Citadel of Blaye**, a UNESCO World Heritage Site, with your Adventure Host, OR

DISCOVERY EXCURSION: Join a **guided tour** to discover Blaye from a different perspective, including a **visit to a local art gallery with wine tasting**, OR

CLASSIC EXCURSION: Take a **panoramic drive** following the famed **Route de la Corniche** along the **right banks of the Dordogne River**, followed by a **guided visit to the Citadel of Blaye**.

Enjoy a **relaxing afternoon sailing on the Dordogne River** to Bourg.

CLASSIC EXCURSION: Take a wonderful **walking tour** in the **Citadel of Bourg** on the banks of the Dordogne River and **visit the carriage museum**.

Alternatively, join an optional guided excursion to learn how the fine champagne of cognac is made



while enjoying a **Rémy Martin tasting**. Later, enjoy **live entertainment on board** your ship. The ship will be docked overnight in Bourg. (B, L, D)

Day 17: Sat, June 05 — BOURG — LIBOURNE — EXCURSION TO SAINT-ÉMILION.

DISCOVERY EXCURSION: Enjoy a **guided visit** to **Saint-Émilion** to discover one Bordeaux' must-see wine-growing towns and celebrate your day with a **wine tasting**, OR

CLASSIC EXCURSION: Join a **guided tour** of the medieval village of **Saint-Émilion**, a UNESCO World Heritage Site of legends and legendary landscapes, OR

CLASSIC EXCURSION: Take an **orientation walking tour** to discover the **history and beauty of Libourne**, where wine and wonderful views are cherished in the 12th century fortified town.

DISCOVERY EXCURSION: **On board lecture about WWII** hosted by a history expert.

The ship will dock overnight in Libourne. (B, L, D)

Day 18: Sun, June 06 — LIBOURNE — BORDEAUX. Join your Adventure Host for today's special activities.

DISCOVERY EXCURSION: While sailing to Bordeaux, enjoy a **pastry demonstration**.

ACTIVE EXCURSION: Join your Adventure Host for a **bike ride** along Bordeaux' postcard river views of the **Les Quais**, OR

CLASSIC EXCURSION: Join a **guided walking tour** to **discover the heart of Bordeaux** with a stroll amid its stunning squares, avenues, and cathedrals sights.

Later, enjoy **live entertainment on board** your ship. The ship will be docked overnight in Bordeaux. (B, L, D)

Day 19: Mon, June 07 — BORDEAUX — EXCURSION TO ARCACHON'S BAY.

ACTIVE EXCURSION: Join your Adventure Host for a **bike ride** along Bordeaux' postcard river views of the **Les Quais**, OR

CLASSIC EXCURSION: Take a **guided tour** to **La Cité du Vin**, Bordeaux's iconic wine museum and cultural center, OR




CLASSIC EXCURSION: Join a **full-day guided tour** of the **seaside resort of Arcachon on the Atlantic coast**. Gaze upon its 19th century architectural treasures and taste its local delicacy of oysters and wine.

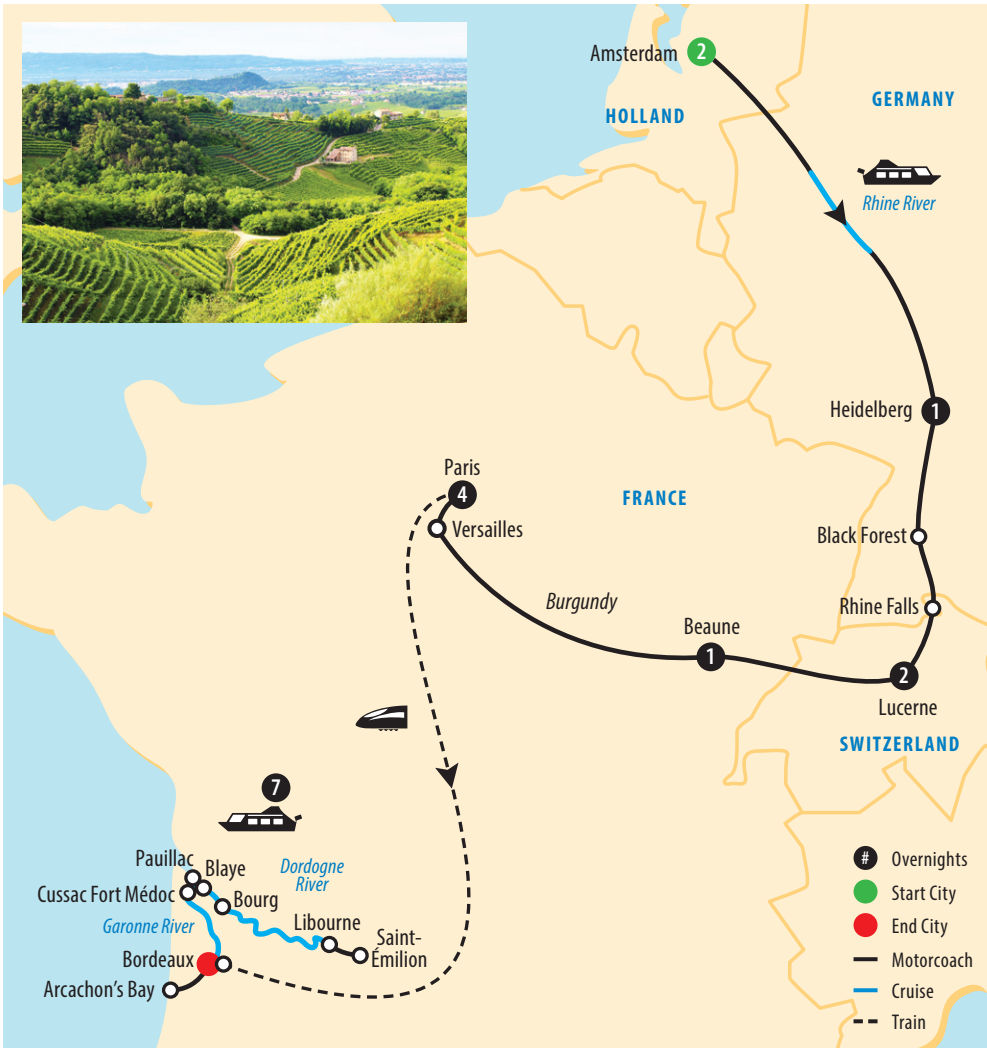
This afternoon, consider an optional guided excursion to Les Bassins des Lumières for a breathtaking visit to the submarine base where art and music surround you in an immersive experience. The ship will remain docked in Bordeaux overnight. (B, L, D)

Day 20: Tue, June 08 — BORDEAUX — DISEMBARK AVALON ARTISITRY II — HONOLULU. Bid farewell to Bordeaux as you prepare for your homeward flight. Arrive Honolulu. Aloha and welcome home! (B)

Join us on this journey of a lifetime! Call today!!

INCLUDED FEATURES:

- 10-nights hotel accommodations.
- 7-nights deluxe cruise accommodations.
- Open-air balconies and wall-to-wall panoramic windows in all Panorama Suites.
- Large bathroom featuring shower with glass door.
- Individual climate control and in-room safe.
- Well-stocked mini-bar.
- Included sightseeing with expert Local Guides with personal headset included.
- Choice of  **CLASSIC**,  **ACTIVE**, or  **DISCOVERY** excursions so that you can experience your cruise your way.
- On board lectures, activities, and entertainment.
- Complimentary Starlink Wi-Fi throughout the ship.
- Non-smoking staterooms and ship interior.
- Wide selection of free movie channels and English-speaking TV.
- Happy hour every evening featuring house beer, wine, cocktails, and a drink of the day.
- Welcome and farewell cocktails with sparkling wine and canapés.
- Daily breakfast buffet with full range of classic breakfast items, healthy Avalon Fresh® options, and daily a la carte specials.
- Complimentary room service for continental breakfast, lunch, and dinner.
- Daily lunch buffet featuring regional specialties, classic dishes, healthy Avalon Fresh® options, and rotating chef's features including carving and pasta stations. Alternatively, you may dine al fresco at the Sky Grill on the Sky Deck (weather and itinerary permitting) or enjoy a light lunch in the Panorama Lounge.
- Afternoon tea featuring tea, coffee, and sweet treats.
- Four-course dinners with choice of appetizers, soups, salads, entrées, and desserts or cheese.
- Linger over several selections from the Panorama Bistro's tasting menu for a less formal "sit-down" atmosphere.
- Complimentary wine, beer, or soft drinks with lunch and dinner.
- Avalon FlexDining® flexible dining times with menu and venue options.
- Vegetarian options at every meal, as well as vegan, low calorie, low fat, high fiber, low cholesterol, high energy, and allergy-free selections.
- Specialty coffees, espresso drinks, and beWell Essence flavored and infused water available throughout each day.
- Club Lounge with 24-hour self-serve beverage station with complimentary cappuccinos, lattes, tea, hot chocolate, and premium coffees, as well as treats throughout the day.
- *AvalonGo App* for your mobile device keeps you informed and on course before and during your cruise.



CATEGORY	FARE
Cat E – Fixed Windows / Indigo Deck Forward, 172 sq. ft.	\$12,819 \$12,069
Cat D – Fixed Windows / Indigo Deck Aft, 172 sq. ft.	\$12,819 \$12,069
Cat B – French Balcony / Sapphire Deck Aft, 200 sq. ft.	\$14,618 \$13,868
Cat A – French Balcony / Sapphire Deck Forward, 200 sq. ft.	\$14,718 \$13,968
Cat P – French Balcony / Royal Deck, 200 sq. ft.	\$14,768 \$14,018
Royal Suite – French Balcony / Royal Deck, 300 sq. ft.	CALL
Final Payment Due	01/08/27
Air Deposit: \$500 per person • Cruise & Land Deposit (non-refundable): \$500 per person	



* Fares are per person, USD based on double occupancy and include all airline and cruise line taxes and fees. Cruise line and airline fuel supplements, taxes and fees are subject to change and tour member is responsible for any increases. Prices shown include cruise in Category E Stateroom on the Indigo Deck. Some airline-imposed personal charges, including but not limited to baggage, priority boarding and special seating, may apply. For details visit www.tripadvisor.com/AirlineFees. After initial deposit, a \$75 per person Non-Stop Travel (NST) Cancellation Fee will apply. Group departures may be cancelled, if there are less than 24 tour members. Final Payment to NST for "non-cruise line" Air and Land Package must be made by money order or personal check. NST does not guarantee that all Tour Members will fly together with Tour Manager. Tour Manager assignments, number of meals offered on tour, tour price, discount, and the "final" cruise or tour itinerary are subject to change with/without notice. **NST reserves the right to correct errors or omissions including but not limited to, fares, fees and surcharges at any time.** Travel to Europe will require a Visa or Visa Waiver – price of this Visa or Visa Waiver is not included in the price of this tour. NST at its discretion, may use group and individual photos on its website, print, television, and various social media. **Special Assistance:** You must notify NST, at time of reservation, of any disability requiring special attention. NST reserves the right to cancel your booking or terminate your vacation if your special needs or disabilities are not suitable for the vacation or if you are not traveling with a companion who will provide all the assistance you require. **Wheelchair and electric scooter access outside of the USA is severely restricted.** †† Earn rewards every time you refer a friend. For each "new-to-NST" customer you refer, both you and your referral can receive a \$25 discount off your next NST escorted group. Gav705 011426

