

Affordable Luxury — Small Group Tours



Japan.
Endless
Discovery.



JAPAN AIRLINES



新潟酒の陣
にいがた
酒の陣
niigata sakenojin

出展日本酒ボトル



**AFFORDABLE LUXURY
— SMALL GROUP
TOUR EXCLUSIVES:**

- Limited to 24 Pampered Tour Members
- A More Relaxed Pace of Touring
- Upgraded Hotels & Meals
- Minimum 2 Nights at Each Hotel
- Sake, Beer & Soft Drinks with All Included Dinners
- “Green Car” Seats on the Shinkansen Bullet Train

Off the Beaten Path: A Different Side of Japan

2027 NIIGATA SAKE NO JIN ANNUAL SAKE FESTIVAL

Plus Sado Island, Shibata City & Tokyo

Enjoy your choice of Japan Airlines’ “Economy,” “Premium Economy,” or the affordable luxury of “Business” class service. Premium Economy class customers will begin their journey with a relaxing visit to JAL’s “Sakura Lounge” and the “Sakura Lounge — Hale” for Business class.

13 Nights / 15 Days • 32 Meals (13 Breakfasts, 9 Lunches, 10 Dinners)

Escorted from Honolulu • Includes an English-Speaking Local Guide

March 10 – 24, 2027 • Tour Manager: Kim Mc Cumsey

VISIT: Tokyo, Niigata, Nagaoka, Sado Island & Shibata City

NIIGATA SAKE NO JIN — One of Japan’s Biggest Sake Celebrations!

The Niigata Sake No Jin festival was originally held in 2004 as a 50th Anniversary Celebration of the Niigata Sake Brewers Association. They studied the biggest beer festival, the Oktoberfest of Germany, and used it as a reference. Their goal is for people of Niigata prefecture and people from outside of Niigata and abroad to enjoy Niigata sake and local foods. Held over two days, the Niigata Sake No Jin, is one of Japan’s biggest celebrations of sake. Although attendance is limited to just four sessions (three hours each) during this two-day event, the festival still attracts thousands of visitors each year. Attendees can sample over 500 varieties of sake from about 90 brewers, along with a wide selection of local cuisine that pairs perfectly with each tasting. As the home to more breweries than any other prefecture in Japan, it’s easy to see why Niigata is known as the “Kingdom of Sake.”

COMPLETE PACKAGES!

Includes Roundtrip Airfare from Honolulu,
13 Nights Hotel, 32 Meals, Tips for Local Tour Guides
and Motorcoach Drivers & All Taxes and Fees

JAPAN AIRLINES: CHOICE OF CABINS

Treat yourself to a better vacation!

JAL ECONOMY CLASS

\$10,988*

JAL PREMIUM ECONOMY CLASS

\$11,988*

HURRY! Only 6 Seats Available at this Price!

JAL BUSINESS CLASS

\$13,988*

HURRY! Only 6 Seats Available at this Price!

EARLY BOOKING DISCOUNT PER PERSON

Book by 06/29/26 & **SAVE \$100!**

Book by 08/31/26 & **SAVE \$50!**

2027 Niigata Sake No Jin Annual Sake Festival

Day 1: Wed, Mar 10 – HONOLULU. Depart Honolulu via Japan Airlines flt #73 at 12:05 pm.

Day 2: Thur, Mar 11 – HANEDA – TOKYO. Arrive at the Haneda International Airport at 4:05 pm. After entry formalities, transfer by coach to your hotel. Enjoy a Welcome Dinner at the hotel. KEIO PLAZA HOTEL TOKYO (2 Nights) (D)

Day 3: Fri, Mar 12 – TOKYO. After a delicious breakfast buffet, depart the hotel for a full day of sightseeing and activities. Explore an oasis of relative calm at the **Hama-rikyu Gardens**, located in the heart of bustling downtown Tokyo. These scenic gardens were once reserved for imperial use only, and were opened to the public in 1946. A few interesting sites to be on the lookout for while strolling the parks, is a 300-year-old pine tree near one of the entrances to the parks, the memorial built to commemorate and console the spirits of the ducks that were killed on the property, and the garden's central pond that is filled with seawater from Tokyo Bay and uses sluice gates to regulate the water levels throughout the day (based on the Bay's tides). Next, take in the view of the surrounding city from the observation deck of the **Tokyo Skytree**. At just over 2,000-ft-tall, it is the tallest tower in Tokyo. Rising 350m above the ground, the Tokyo Skytree Tembo Deck offers a 360° panoramic view of Tokyo. Enjoy lunch (on your own) at Tokyo Skytree or TOKYO Solamachi – located at the base of the Tokyo Skytree – where a variety of restaurant and food choices are available. After lunch, get ready to **shop in Ginza!** The Ginza landscape of traditional department stores has undergone an energizing facelift in recent years with the advent of GINZA SIX, a soaring complex of fashion houses and restaurants catering to the global consumer, and Tokyu Plaza Ginza. Japanese businesses are also joining the development rush, putting their considerable resources into the plush shopping and restaurant idyll of GINZA PLACE and the renewal of a Ginza stalwart, the Sony Building. But don't forget to visit the long-established department stores, such as Ginza Mitsukoshi, Matsuya Ginza, and Wako. Tonight, indulge in a fabulous **A5 Wagyu steak dinner**. After dinner, return to the hotel. (B, D)

Day 4: Sat, Mar 13 – TOKYO – NIIGATA. After a delicious breakfast buffet, transfer to Tokyo Station by coach. An ekiben (train bento box) will be passed out while you wait, to enjoy on the train ride. Transfer to Niigata by **Shinkansen Bullet Train** with **reserved seating in the Green Car**. Upon arrival in Niigata, enjoy free time at the **Niigata Furusato Village**, where there are shops selling Niigata specialties. Next, **pick fruit** at the peak for ripeness. What a sweet afternoon treat! En route to the hotel, stop at an **AEON MALL**, with free time for shopping and dining (on your own). Arrive at the hotel for an evening of leisure. HOTEL NIKKO NIIGATA (4 Nights) (B, L)

Day 5: Sun, Mar 14 – NIIGATA. After breakfast at the hotel, walk over to the TOKI MESSE: Niigata Convention Center, conveniently connected to the hotel, and enjoy **three hours of sake tasting** at the **NIIGATA SAKE NO JIN** festival. After entering the venue, you will receive an ochoko (small tasting cup), which you'll take with you as you explore the festival. As you walk around the venue, you can taste each brewery's signature sakes – which you are free to sample as many varieties as you like, as often as you like. Breweries often offer limited-edition bottles that are not found in stores, newly unveiled labels, or special tasting exclusives at the festival, which makes this event even more special for sake enthusiasts. Niigata specialty foods, which pair well with the sakes offered, are also available for purchase. After three hours, carefully walk back to the hotel for some leisure time before dinner. (B, D)

Day 6: Mon, Mar 15 – NIIGATA – NAGAOKA – NIIGATA. After breakfast, learn about and shop for two ingredients essential to Japanese cuisine at a **miso factory** and a **shoyu factory**. Next, visit **Michi-no-Eki Nagaoka Hanabikan**, a completely new type of next-generation michi-no-eki (roadside station) that provides a diverse array of services. It functions as a place of rest and recuperation, and a place that shows off the wonder of Nagaoka. The biggest attraction is the Fireworks Theater, where visitors can watch a 30-minute fireworks show and view displays of life-size firework shells and casings. Enjoy lunch while here. After, visit the **Asahi Shuzo Sake Brewery**. Since it's founding in 1830, Asahi Shuzo has continued to brew sake under the "quality first" principle, using soft water drawn from pure underground streams that flow under the brewery, as well as top quality rice from local farmers. Asahi Shuzo's passion for using only Niigata-grown ingredients has earned them numerous awards in Japan and abroad. Take a **tour of the facilities**, learn how their sake is made, then enjoy a **sake tasting** afterward. Next, dine at the on-site restaurant, where you'll enjoy dishes made with the seasonal flavors of Niigata in mind. After dinner, return to the hotel. (B, L, D)

Day 7: Tue, Mar 16 – NIIGATA. Start the day with a **senbei (rice cracker) making** experience. Next, visit the **Northern Culture Museum**, where you'll have a **special hagama set lunch** (rice cooked in traditional cast iron pot) and **learn how to pound mochi**. Originally serving as a mansion of Ito Bunkichi, who lived during the Edo Period (1603–1868) and was one of the greatest landowners in Japan, the museum houses calligraphy and ceramics, lacquer ware, and documents related to Ito's family history. You can also visit the "walking" garden with its large pond. Tonight, we're all in for treat!! Be entertained during dinner by an **authentic Geiko**, with dancing, singing and playing fun games. A Geiko is a highly trained entertainer, specifically in Kyoto, who performs in the area of singing, dancing, and music. Outside of Kyoto, these entertainers are more commonly known as Geisha. (B, L, D)

*Baggage will be sent from Niigata to Shibata City, skipping Sado Island. Prepare an overnight bag for three nights.

Day 8: Wed, Mar 17 – NIIGATA – SADO ISLAND. Transfer to Niigata Port. Ride the **jet foil to Sado Island**. Upon arrival in Sado Island, enjoy lunch at a local restaurant. After lunch, learn about the toki (crested ibis), a national icon that once became extinct in Japan, but now once again inhabits Sado Island. The **Sado Japanese Crested Ibis Conservation Center**, is a conservation park and museum where visitors can see the endangered crested ibis and learn more about the efforts to increase their population. During the Meiji period (1868–1912), the bird suffered overhunting, habitat loss, and a reduction of food sources caused by chemicals used in agriculture. Transfer to the hotel, where you will have some time to explore the hotel before dinner. Tonight, enjoy a traditional multi-course **Kaiseki Dinner**, featuring ingredients unique to Sado Island. During dinner, watch an **Oni Daiko (Demon Drums) Performance**. The Japanese word "oni" roughly translates to "demon" or "ogre" in English, making Westerners think of an evil entity for religious reasons. However, that doesn't do the notion of oni on Sado Island justice. On Sado Island, they are seen as friendly deities that would ward off evil by dancing and playing the taiko drum. This is called Oni Daiko (Demon Drums), or "Ondeko" in the local dialect. While it is unknown when the tradition of Oni Daiko started on Sado Island, the oldest known record of Oni daiko is an illustration of the Aikawa Festival that dates back to around 1744. Oni Daiko is often performed at local temples and shrine festivals, especially around April (rice planting season) and October (rice harvesting season) to pray for an abundant crop. Though not official events, you may run into an Oni Daiko performance during a stroll through the streets "off-season" as well, when they perform "Kadozuke" within their community, going from door to door to cleanse every household from harmful energy. The oni dances to the rhythm of the taiko drum, then enters the house, taking all the bad energy upon himself. When it comes out again, the oni brushes off the bad energy sticking to its hair and body with drum sticks while dancing and drums it into the taiko. Afterwards, the drum needs to be taken to the village's shrine or temple to have it ritually purified. After dinner, **relax in your private open-air onsen hot spring**, located in your own room. Or try out the public onsen facilities, which are divided for men and women, and can be enjoyed indoors or outdoors. The high-quality service and facilities are sure to become some of your fondest memories of your visit to Japan. HOTEL AZUMA (3 Nights) (B, L, D)

Day 9: Thur, Mar 18 – SADO ISLAND. Full day sightseeing of Sado Island by coach, starting with a visit to the **Obata Sake Brewery**, the brewer of *Manotsuru*. Established in 1892, this brewery has won the gold prize a total of ten times at the nation's most respected *National New Sake Awards*. It was also honored three times with a prestigious gold medal in the sake category, at the world's largest wine competition held in London, the *International Wine Challenge* (in 2004, 2007, and 2015). This is your chance to purchase some of these prize winning sakes for your own collection. Learn how to **make soba noodles** from scratch! Enjoy your delicious creation for lunch. After, explore the **Sado Nishimikawa Gold Park** and learn about Sado Island's history as a gold-producing region. Through detailed models, video displays, gold replicas, and mining tools, Sado Island's gold past comes to life. Next, take a traditional **tarai-bune boat ride**. The tarai-bune tub boats floating along the Ogi coastline are considered the symbol of Ogi. These boats are constructed out of cedar wrapped with bamboo on the outside, with a diameter of about 150cm. Developed and used during Edo and Meiji Periods, the tarai-bune tub boats, mainly operated by women, were ideal for tight turn and stability amidst the abundant reefs and coves along the Ogi Peninsula. These boats were originally used for collecting shellfish and seaweed from around the coast. Then, visit the charming fishing village of **Shukunegi**, which is designated as a National Historic Site. Take a stroll along the narrow streets of Shukunegi to feel the history and experience the living conditions during the Edo period. As this area was previously a trading port for ships going to Edo (modern-day Tokyo) and Osaka, many who lived here were ship carpenters and sailors. Here, you will be able to find the popular sankaku-ya, which is a triangle-shaped house built to fit the shape of the land available at that period of time. Enjoy dinner at local restaurant before returning to the hotel. (B, L, D)

Plus Sado Island, Shibata City & Tokyo



Japan.
Endless
Discovery.

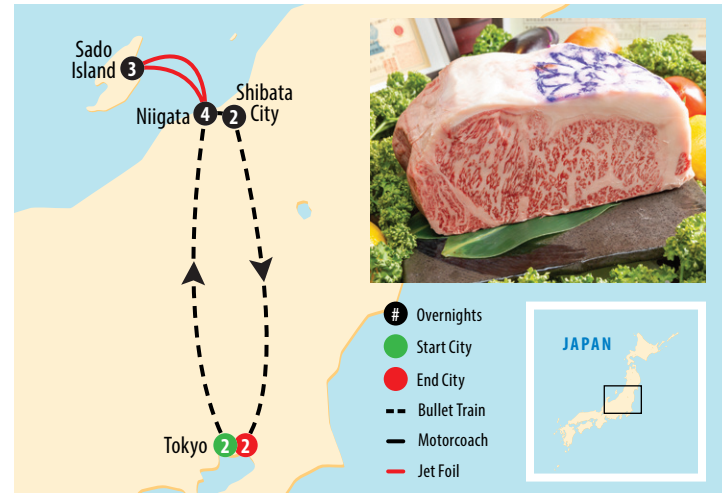


JAPAN AIRLINES



Day 10: Fri, Mar 19 – SADO ISLAND. Begin the day at **Kirarium Sado**, the Sado Gold and Silver Mine Welcome Center, where you can learn everything you wanted to know about Sado's gold and silver mining history. In the theater, you can view videos of the mines from its start in 1601 when full-scale mining began to 1989 when mining stopped. One of Tokugawa Ieyasu's first acts after becoming shogun, was to place Sado Island under the direct control of the shogunate. Gold and silver from the mines was a key source of funding for Tokugawa and his successors. The koban, a Japanese oval gold coin, was casted in Sado Island on the order of the Tokugawa Shogunate. The Japanese economy before the mid-19th century was based largely on rice. The koban symbolizes immense wealth and power, and is commonly depicted on maneki-neko (beckoning cats) to signify luck, fortune, and prosperity. You'll get to **make your own koban** to take home as a souvenir of this trip. A flotation plant is a site where the final stages of gold mining take place. It's where the valuable minerals that get extracted from the mine are separated from all the other things that get dug out, such as waste materials and other by-products. Built during the first half of the 1900s, the **Kitazawa Flotation Plant** was once the biggest producers of ore in East Asia. Since then, the site has mostly remained idle and to a large extent untouched, leading to the entire structure being overgrown with plants and vines. Take a drive by the massive ruins, before heading to lunch. After lunch, spend time at a **local supermarket**. Local supermarkets have the best prices for local snacks and omiyage to bring back home for family and friends. What did you think about the Oni Daiko performance at dinner two nights ago? You'll have your own chance to "ward off evil" during an **Oni Daiko drum lesson**. Oni Daiko can be divided into five different styles based on the characteristics of their dancing, drum rhythm, costumes, and props. The most common is the Katagami-style that is practiced mainly in the center of the island. This style is thought to have been influenced by Noh (a major form of classical Japanese dance-drama), since the tempo is generally slower and the oni dance using suriashi (sliding steps), a move distinctive of Noh. The Mamemaki-style is home to Aikawa, where the Gold Mine is. Here, an old man scatters beans and dances around the oni, while the oni, carrying a long sword, remains standing for the most part. Around the middle of the southern coastline, they perform in the Maehama-style. Two oni dance together, sometimes joined by a person clad in yellow directing them. A flute also accompanies the drum. The Issoku-style can be found in Ogi area and is characterized by the oni jumping on one foot while playing the drum. The rarest style is the Hanagasa-style, which is performed in only two villages on the eastern tip of Sado Island. The oni are one part of a larger performance including a lion dance and a folk song performance. Which style did you learn today? Enjoy dinner at a local restaurant before returning to the hotel for the evening. (B, L, D)

Day 11: Sat, Mar 20 – SADO ISLAND – NIIGATA – SHIBATA CITY. After breakfast, transfer to the Ryotsu Port to take the **jet foil to Niigata Port**. Upon arrival in Niigata, enjoy lunch at **Cave D'occi Winery**. After lunch, visit a **knife factory at Tsubame-Sanjo**. Tsubame-Sanjo is a combination of the names Tsubame City and Sanjo City, which were both famous from metal products since the Edo period (1603–1868). Tsubame-Sanjo is known all over the country as the top maker of kitchen goods, kitchen knives in particular. What makes Japanese knives so famous around the world? The knife blades give a sharper and more precise cut. This is your chance to own one of these skillfully honed knives for yourself. Then, **learn how to make a kite**. What a great souvenir of this trip! Transfer to Shibata City. Kihachiro Okura, businessman and founder of the Okura Zaibatsu (Okura Financial Group, which later became the Taisei Corporation), and the Okura Shogyo Gakko (Okura Commerce School, which later became Tokyo University of Economics), was born in Niigata as the son



of the head of a big village in Shibata. He built a guest house in Tokyo that he named **Zoshunkaku**, which was later brought over to Shibata and reassembled. Dinner tonight will be held in this historic building. This evening, don't forget to try out the **#1 best onsen facilities in all of Japan**. You don't want to miss out! **SHIRATAMA NO YU KAHU** (2 Nights) (B, L, D)

Day 12: Sun, Mar 21 – SHIBATA CITY. Take a tour of the **Aumont Sake Brewery** and learn how they have been making quality sake for more than 200 years. Using water from the Kaji River, and only local Niigata rice (gohyakumangoku and Koshianrei), the sakes created here are high in aromatics and feature a subtle sweetness. You're sure to find a sake that matches your palate. Enjoy lunch at Tanihei for a taste of Shibata, which uses local ingredients from the area. After lunch, visit **Tonton Ichiba** for a chance to purchase local ingredients from the Shibata area. Return to the hotel for the some time to rest before dinner at the hotel. (B, L, D)

Day 13: Mon, Mar 22 – SHIBATA CITY – TOKYO. Transfer to the Niigata Train Station and depart on a **Shinkansen Bullet Train with reserved seating in the Green Car** to Tokyo. Upon arrival in Tokyo, **learn the art of Edo kiriko edging**, a traditional form of cut glass manufacturing that was developed in the late-Edo period (in the early 19th century) in Tokyo. Edo kiriko is characterized by its beautiful, intricate patterning and a bold contrast between colored and non-colored elements. What sets Edo kiriko apart from other glass cutting techniques are the 20 intricate patterns traditionally used to decorate the glass and its incredible thinness. While Satsuma kiriko (another glass cutting technique) uses glass that is typically 2-3mm thick, Edo kiriko uses glass that is only 1mm thick. And when you gently flick the glass, it makes an almost metallic sound. Finally, transfer to the hotel located in the center of Shinjuku, the hub of shopping and restaurants in Tokyo. The remainder of the day is at your leisure. **KEIO PLAZA HOTEL TOKYO** (2 Nights) (B)

Day 14: Tue, Mar 23 – TOKYO. Enjoy a full day at leisure. Enjoy shopping and dining in the bustling Shinjuku area. Your Local Guide will be available to assist as needed. (B)

Day 15: Wed, Mar 24 – TOKYO – HANEDA – HONOLULU. Start the day at **Toyosu Senkyaku Banrai**, a shopping complex that recreates an Edo period neighborhood. Toyosu Senkyaku Banrai offers fresh food from the neighboring Toyosu Market and serves to showcase the best foods in Tokyo. Enjoy shopping here, exploring the offerings at the numerous stalls. If you get tired, head up to the 8th floor and relax at the foot bath garden, which is free of charge to all visitors. Today's highlight will be a hands-on **cooking class**, which will yield your delicious lunch. After lunch visit **Ameyoko**, a busy market street along the Yamanote Line tracks between Okachimachi and Ueno Stations. The name "Ameyoko" is a short form for "Ameya Yokocho" (candy store alley), as candies were traditionally sold there. Alternatively, "Ame" also stands for "America," because a lot of American products used to be available there when the street was the site of a black market in the years following WWII. Today, various products such as clothes, bags, cosmetics, fresh fish, dried food, and spices are sold along Ameyoko. Transfer to the Haneda International Airport for the flight home. Depart Tokyo on Japan Airlines flt #74 at 9:00 pm and arrive in Honolulu at 9:00 am the same day. Aloha and welcome home! (B, L)

Affordable Luxury — Small Group Tours



Japan.
Endless
Discovery.



JAPAN AIRLINES

TOUR HIGHLIGHTS: Hama-rikyu Garden, Tokyo Skytree, Shinkansen Bullet Train Ride, Niigata Furusato Village, Niigata Sake No Jin, Northern Culture Museum, Jet Foil Ride to Sado Island, Sado Japanese Crested Ibis Conservation Center, Sado Nishimikawa Gold Park, Tarai-bune Boat Ride, Shukunegi, Kirarium Sado, Kitazawa Flotation Plant (Drive By) & Jet Foil Ride to Niigata

SHOPPING HIGHLIGHTS: Ginza Area, AEON MALL, Miso Factory, Shoyu Factory, Michi-no-Eki Nagaoka Hanabikan, Local Supermarket, Knife Factory at Tsubame-Sanjo, Tonton Ichiba, Toyosu Senkyaku Banrai & Ameyoko

SAKE BREWERY HIGHLIGHTS: Asahi Shuzo Sake Brewery, Obata Sake Brewery & Aumont Sake Brewery

MEAL HIGHLIGHTS: A5 Wagyu Steak Dinner, Hagama Set Lunch, Dinner with an Authentic Geiko, Dinner with an Oni Daiko Performance, Lunch at Cave D'occi Winery, Dinner at Zoshunkaku & Kaiseki Dinners

HANDS-ON EXPERIENCES: Fruit Picking, Senbei (Rice Cracker) Making, Mochi Pounding, Soba Noodle Making, Koban Making, Oni Daiko Drum Lesson, Kite Making, Edo Kiriko Edging & Cooking Class

HOTEL ACCOMMODATIONS:



KEIO PLAZA HOTEL TOKYO (TOKYO — 2 NIGHTS + 2 NIGHTS = 4 NIGHTS TOTAL):

The Keio Plaza Hotel Tokyo is situated in the perfect location to explore the delights of the city of Tokyo. Just outside the Tochomae Station and only a five-minute walk from Shinjuku Station, one of the most popular shopping and entertainment spots, this luxury hotel provides stunning experiences which will linger with guests for a long time. Stay in a **Premier Grand Room** (located on the 35th to 41st floors), with stunning views of the city, where you will have **access to the Club Lounge** on the 45th floor.



HOTEL NIKKO NIIGATA (NIIGATA — 4 NIGHTS): Conveniently **connected to the TOKI MESSE: Niigata Convention Center (the location of the Niigata Sake No Jin festival)**, the comfortable accommodations of Hotel Nikko Niigata are perfectly suited for travelers. The hotel and surrounding structure resembles a luxury liner floating on the Shinano River, with skillfully designed state-of-the-art hotel rooms, restaurants where you can enjoy the beautiful views of the Shinano River, as well as complete banquet services at the Sky Banquet located on the top floor of the hotel.



NON-STOP TRAVEL EXCLUSIVE!

DON'T MISS A THING!!
WHISPER — Wireless Tour Guide System!
English narration directly to your ear!

NON-STOP TRAVEL NIIGATA, SADO ISLAND & SHIBATA CITY EXCLUSIVES!

KAISEKI DINNER — With Geiko (Geisha) Performance!

ONI DAIKO — Demon Drums Performance & Drum Lesson!

ZOSHUNKAKU — Guest House in Shibata City!



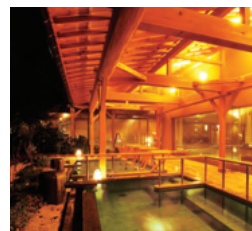
HOTEL AZUMA (SADO ISLAND — 3 NIGHTS):

Offering **traditional Japanese-style rooms** with beautiful ocean sunset views, Hotel Azuma is right on Sado Island's rugged western coast. Your room at Hotel Azuma will have tatami floors and its own **private open-air onsen hot spring bath**. Feel like you are a part of nature in the privacy of your own room.



SHIRATAMA NO YU KAHO (SHIBATA CITY — 2 NIGHTS):

Relax in your **Japanese-style room that includes a wide veranda**. The hotel's large public bath is equipped with an indoor bath, large sauna, cold water bath, circular open-air bath that includes a cypress bath, large rock bath, lying bath, and a sitting bath. The outdoor open-air bath and cooling space are equipped with infinity chairs. After getting out of the bath, you can enjoy the hotel's special shrimp miso soup and various drinks in the spacious rest area, and at the back of the large bath, there is a dedicated beauty salon and scrubbing space. It's no wonder the facilities are considered the **#1 best onsen in ALL of Japan!**



Great Memories Never End with Non-Stop Travel!
Locally Owned & Operated Since 1985 — Mahalo Hawaii!

615 Piikoi Street, Suite 102, Honolulu, HI 96814

593-0700 or Toll-Free **1-800-551-1226**

www.nonstop.travel



* Fares are per person, USD based on double occupancy and include all airline taxes and fees. Airline fuel supplements, taxes and fees are subject to change and tour member is responsible for any increases. Some airline-imposed personal charges, including but not limited to baggage, priority boarding and special seating, may apply. For details visit www.tripadvisor.com/AirlineFees. After initial deposit, a \$75 per person Non-Stop Travel (NST) Cancellation Fee will apply. Group departures may be cancelled, if there are less than 24 tour members. Final payment to NST for "non-cruise/line" Air and Land Package must be made by money order or personal check. NST does not guarantee that all tour members will fly together with Tour Manager. Tour Manager assignments, number of meals offered on tour, tour price, discount, and the "final" cruise or tour itinerary are subject to change with/without notice. Tour highlights and activities are subject to change. **NST reserves the right to correct errors or omissions including but not limited to, fares, fees, and surcharges at any time.** Deposit: \$500 per person. Final Payment Due: 10/30/26. NST at its discretion, may use group and individual photos on its website, print, television, and various social media. † Early booking discount is per person. Purchase of NST's complete Air and Land Package is required. †† Earn rewards every time you refer a friend. For each "new-to-NST" customer you refer, both you and your referral can receive a \$25 discount off your next NST escorted group. **Special Assistance:** You must notify NST, at time of reservation, of any disability requiring special attention. NST reserves the right to cancel your booking or terminate your vacation if your special needs or disabilities are not suitable for the vacation or if you are not traveling with a companion who will provide all the assistance you require. **Wheelchair and electric scooter access outside of the USA is severely restricted.**

J17003 042726

