



Japan.
Endless
Discovery.

JAL
JAPAN AIRLINES

2025 SUMMER LAVENDER & NORTHERN HOKKAIDO TOUR FEATURING RISHIRI ISLAND

Enjoy your choice of Japan Airlines' "Economy," "Premium Economy," or the affordable luxury of "Business" class service. Premium Economy class customers will begin their journey with a relaxing visit to JAL's "Sakura Lounge" and the brand new "Sakura Lounge — Hale" for Business class.

9 Nights / 11 Days • 21 Meals (9 Breakfasts, 5 Lunches, 7 Dinners)
Escorted from Honolulu • Includes an English-Speaking Local Guide
July 20 – 30, 2025 • Tour Manager: Laureen Chu

Join Pali Ka'aihue as we travel through Hokkaido! We will be taping a few episodes of DOKO GA TV to be aired on KFVE "The Home Team!" & KHNL!

VISIT: Chitose • Rishiri • Rebun • Wakkanai • Furano • Biei • Yubari • Otaru • Sapporo

TOUR HIGHLIGHTS: Domestic Flight to Rishiri • Kamui Kaigan Park • Senpoushi Misaki Park Otatomari Pond • Ferry Ride to Rebun Island • North Canary Park • Sukoton Cape • Sukai Cape Ferry Ride to Rishiri • Himenuma Pond • Ferry Ride to Wakkanai • Wakkanai Fukuko Ichiba Market Soya Cape • Kita Bouhatei Dome • Sarobetsu Marshland • Otonrui Windmills • Haboro Rose Garden Furano Cheese Factory • Tomita Farm • Blue Bond • Shirahige Waterfall • Shikisai-no-Oka Yubari Melon Dome • Tanaka Shuzo Sake Brewery • Otaru Canal • Music Box Museum Kitaichi Glass Company • ROYCE' Cacao and Chocolate Town • Former Government Building TV Tower • Odori Park • Clock Tower • Tanuki Koji Shopping Arcade • AEON MALL Chitose Airport Domestic Terminal Shopping

HANDS-ON ACTIVITIES: Kelp (Konbu) Souvenir Making • Clean an Uni (Sea Urchin) Ice Cream Making • Sake Brewery Tour and Tasting

**Non-Stop Travel
Exclusive!**

DON'T MISS A THING!!
WHISPER — Wireless Tour Guide System!
English narration directly to your ear!

**Non-Stop Travel
Hokkaido
Exclusives!**

ICE CREAM MAKING — Made with
Fresh Milk Straight from the Ranch!
CRABS — Pick'em "LIVE" from the tank!
Savor the sweet "freshly steamed" morsels!

COMPLETE PACKAGE!

Includes Roundtrip Airfare from Honolulu,
9 Nights Hotel, 21 Meals, Tips for Local Tour
Guides and Motorcoach Drivers, All Taxes & Fees

JAPAN AIRLINES: CHOICE OF CABINS

Treat yourself to a better vacation!

JAL ECONOMY CLASS

\$5,788*

JAL PREMIUM ECONOMY CLASS

\$6,788*

HURRY! Only 6 Seats Available at this Price!!

*Premium Economy seating is for flights between Honolulu and Japan only. Domestic Japan flights do not offer Premium Economy seating.

JAL BUSINESS CLASS

\$8,788*

HURRY! Only 6 Seats Available at this Price!!



**NON-STOP
TRAVEL**

*Locally Owned & Operated
Since 1985 — Mahalo Hawai'i!*

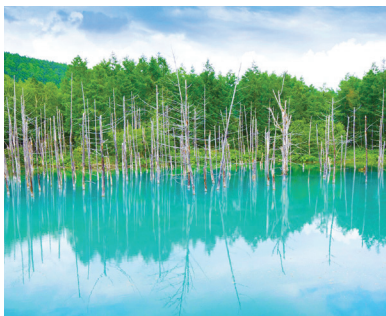
615 Piikoi Street, Suite 102
Honolulu, Hawai'i 96814

593-0700

**or Toll-Free
1-800-551-1226**

www.nonstop.travel

040125



Day 1: Sun, July 20 — HONOLULU. Depart Honolulu via Japan Airlines flt #73 at 12:45 pm.

Day 2: Mon, July 21 — TOKYO — CHITOSE. Arrive in Haneda International Airport at 3:55 pm. After entry formalities, enjoy a bento box at the domestic departure gate. Depart Haneda Domestic Airport via Japan Airlines flt #527 at 6:40 pm. Arrive in Chitose Domestic Airport at 8:15 pm. Walk to your hotel located within the airport terminal. AIR TERMINAL HOTEL (1 Night) (D)

*Baggage will be sent from Chitose to Wakkanai, skipping Rishiri. Prepare overnight bag for two nights. **Overnight bag cannot exceed 44 lbs due to limits allowed on domestic flight to Rishiri Island.**

Day 3: Tue, July 22 — CHITOSE — RISHIRI. After breakfast, walk to the domestic terminal for the **flight to Rishiri** (baggage limited to 44 lbs on domestic flight). Enjoy lunch (on your own) at the airport. Upon arrival in Rishiri, visit the **Kamui Kaigan Park**, where you will have the chance to **make kelp (konbu) souvenirs** and learn how to (carefully) **clean an uni** (sea urchin). Now head to the southern point of Rishiri and visit **Senpoushi Misaki Park**, where you may have the chance to see seals. Next, visit **Ootomari Pond**, whose image is stamped on the wrapping paper of Hokkaido's favorite chocolate confectionary "Shiroi Koibito," before arriving at the hotel. Enjoy a buffet dinner at the hotel. ISLAND INN RISHIRI (2 Nights) (B, D)

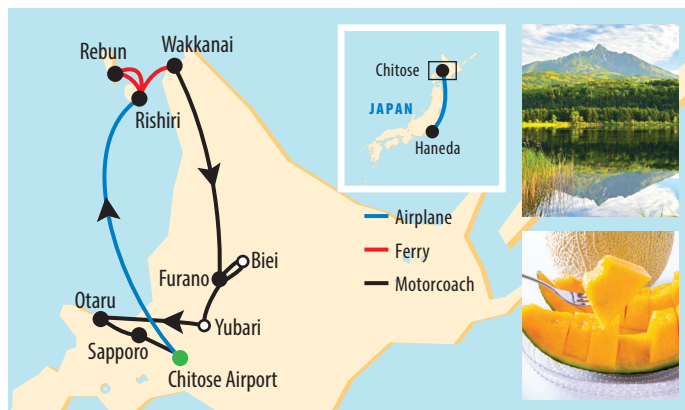
Day 4: Wed, July 23 — RISHIRI — REBUN — RISHIRI. After breakfast, depart Rishiri and travel by **ferry to Rebun Island**. Upon arrival on Rebun, visit **North Canary Park**, which was the filming location of the 2012 Japanese movie, *Canaries of the North*. The school building that was built for the movie houses photos and costumes from the film. One of the highlights of the park is the spectacular view of Rishiri Island, which looks as if it is floating on the ocean. After lunch, view the incredible landscapes from **Sukoton Cape** and **Sukai Cape**. Return to Rishiri by **ferry**. Enjoy a buffet dinner at the hotel. (B, L, D)

Day 5: Thur, July 24 — RISHIRI — WAKKANAI. Begin the day exploring **Himenuma Pond**. Transfer to the Oshidomari port, where you'll have the chance to purchase lunch (on your own) there before departing by **ferry to Wakkanai**. Spend some time at **Wakkanai Fukuko Ichiba Market**, which specializes in just caught and dried seafood. Stop at **Soya Cape**, for a view from the northern most point in Japan. Drive by the **Kita Bouhatei Dome** (Wakkanai North Breakwater Dome), the symbol of Wakkanai, before arriving at the hotel for the evening. Enjoy a **Kaiseki Dinner** at the hotel tonight. SURFEEL HOTEL WAKKANAI (1 Night) (B, D)

Day 6: Fri, July 25 — WAKKANAI — FURANO. Visit **Sarobetsu Marshland**, a National Wetland Park. Drive by the **Otonrui Windmills**. After lunch, stop at **Haboro Rose Garden** where 2,000 rose plants (in 300 varieties) will be in bloom. Enjoy a buffet dinner at the hotel tonight. Don't forget to try out the **onsen hot springs** — which are divided for men and women — allow you to enjoy the onsen hot springs whether indoors or outdoors. The high-quality service and facilities are sure to become some of your fondest memories of your visit to Japan. SHIN FURANO PRINCE HOTEL (2 Nights) (B, L, D)

Day 7: Sat, July 26 — FURANO — BIEI — FURANO. After a sumptuous breakfast buffet at your hotel, visit the **Furano Cheese Factory** to **learn how to make ice cream**. A refreshing treat on a hot summer day! Then visit the **Tomita Farm**, simply the best spot to enjoy the **lavender fields**. Lavender usually starts blooming in late June and reaches its peak around mid-July to early August. After lunch, visit **Blue Pond** and **Shirahige Waterfall**. The pond gets its name from the almost unworldly blue color of its waters. Depending on the weather and season, it can change from a milky light blue to a deep green-turquoise. The waterfall gets its name, which means "white beard waterfall" from the vision created by the curtains of water cascading through the gaps in the cliff side. The panoramic flower gardens of **Shikisai-no-Oka** provide spectacular views across the hills of the Biei Area. Return to Furano for dinner this evening. (B, L, D)

*Baggage will be sent from Furano to Sapporo, skipping Otaru. Prepare overnight bag for one night.



Day 8: Sun, July 27 — FURANO — YUBARI — OTARU. Start the day at the **Yubari Melon Dome** where the popular character "melon bear" was born and where the orange-fleshed Yubari Melon (Japan's Cadillac of melons) is showcased. You'll have the chance to enjoy an **"all you can eat"** session of these prized melons, along with shop for some melon related products. After lunch, visit to the **Tanaka Shuzo Sake Brewery**, where you will take a **tour of the facilities** and **try some of their tasty products**. Continue to Otaru, a major trade and fishing port in the 1800s. Start your introduction to Otaru with a stroll around the **Otaru Canal**. Stop at the **Otaru Music Box Museum**. A visit to the **Kitaichi Glass Company** will delight your eyes with beautiful creations. Enjoy the evening at leisure to explore more of Otaru on your own. GRAND PARK OTARU (1 Night) (B, L)

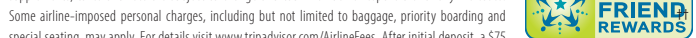
Day 9: Mon, July 28 — OTARU — SAPPORO. Begin the day with a visit to the new **ROYCE' Cacao and Chocolate Town** to learn how the famous Royce chocolate treats are made. Receive a complimentary sample at the end of the tour. For lunch, **pick out "LIVE" crabs** at Kitano Gourmet Tei, to enjoy with your Kaisen don lunch. Upon arrival in Sapporo, take a brief sightseeing tour of the **Former Government Office Building**, **TV Tower**, **Odori Park**, and the **Clock Tower** before arriving at the hotel. Enjoy shopping at **Tanuki Koji Shopping Arcade**, the largest and oldest shopping arcade in Sapporo, which houses over 200 shops. Enjoy dinner at a local restaurant. KEIO PLAZA HOTEL SAPPORO (2 Nights) (B, L, D)

*One live crab for every 6th tour member; subject to weather conditions and availability.

Day 10: Tue, July 29 — SAPPORO. Full day at leisure. Explore Sapporo on your own. Looking for more shopping opportunities? Don't miss the five-story DAISO store! (B)

Day 11: Wed, July 30 — SAPPORO — HONOLULU. After breakfast, stop at **AEON MALL** before departing for the airport. Arrive early at the Chitose Airport early at the Chitose Airport and begin exploring the **shopping mall located within the Domestic Terminal**. Consisting of four floors of restaurants, shops and activities, there's something for everyone. Those with a sweet tooth will enjoy the Sweets Zone, where you can enjoy Hokkaido sweets in a spacious and relaxing setting, and the ROYCE' Chocolate World (factory, museum, shop, and bakery) and LeTAO Chocolatier. The kids (and those young at heart) will enjoy the Doraemon Sky Park and Hello Kitty Happy Flight, which have an activity area, shop and café (fees may apply) or the Pokémon store. UNIQLO aims to provide customers with "ultimate casual clothes." And there are more than two dozen shops at the airport that specialize in various fresh, frozen, or dried seafood that can be eaten there or packed for you to bring home. Or you can relax in the airport onsen hot spring or movie theater (for a fee). Depart Chitose Domestic Airport via Japan Airlines flt #518 at 5:05 pm. Arrive Haneda Domestic Airport at 6:45 pm. Depart Haneda International Airport via Japan Airlines flt #74 at 9:05 pm and arrive Honolulu at 9:50 am the same day. Aloha and welcome home! (B)

*Fares are per person, USD based on double occupancy and include all airline taxes and fees. Airline fuel supplements, taxes and fees are subject to change and tour member is responsible for any increases. Some airline-imposed personal charges, including but not limited to baggage, priority boarding and special seating, may apply. For details visit www.tripadvisor.com/AirlineFees. After initial deposit, a \$75 per person Non-Stop Travel (NST) Cancellation Fee will apply. Group departures may be cancelled, if there are less than 24 tour members. Final payment to NST for "non-cruise/line" Air and Land Package must be made by money order or personal check. NST does not guarantee that all tour members will fly together with Tour Manager. Tour Manager assignments, number of meals offered on tour, tour price, discount, and the "final" cruise or tour itinerary are subject to change with/without notice. **NST reserves the right to correct errors or omissions including but not limited to, fares, fees, and surcharges at any time.** Deposit: \$500 per person. Final Payment Due: 03/12/25. NST at its discretion, may use group and individual photos on its website, print, television, and various social media. DOKO GA TV episodes will be taped. A "Video Release Form" will be included with your final payment notice. †† Earn rewards every time you refer a friend. For each "new-to-NST" customer you refer, both you and your referral can receive a \$25 discount off your next NST escorted group. **Special Assistance:** You must notify NST, at time of reservation, of any disability requiring special attention. NST reserves the right to cancel your booking or terminate your vacation if your special needs or disabilities are not suitable for the vacation or if you are not traveling with a companion who will provide all the assistance you require.



Wheelchair and electric scooter access outside of the USA is severely restricted. 040125